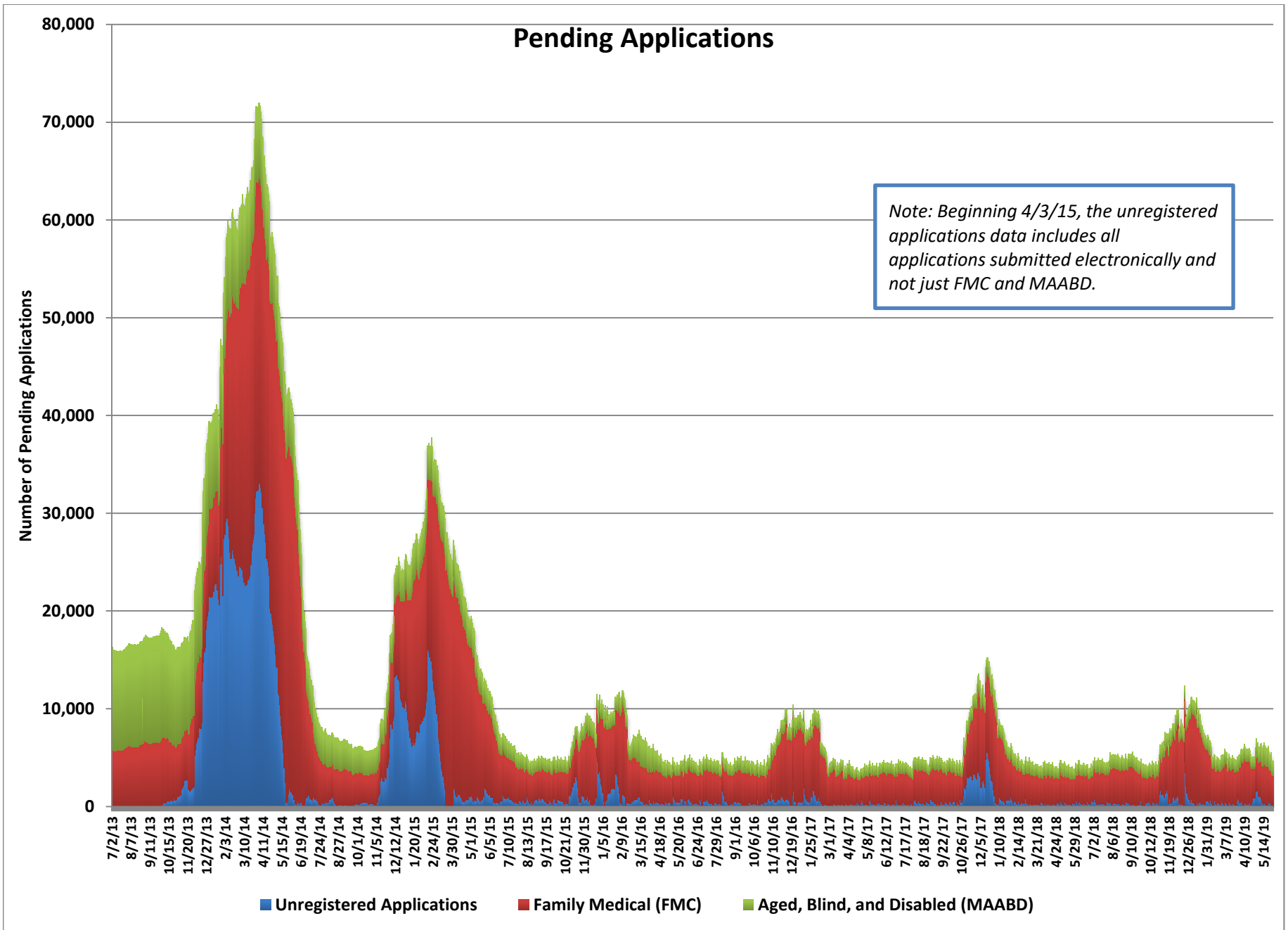


Medicaid Chart Pack

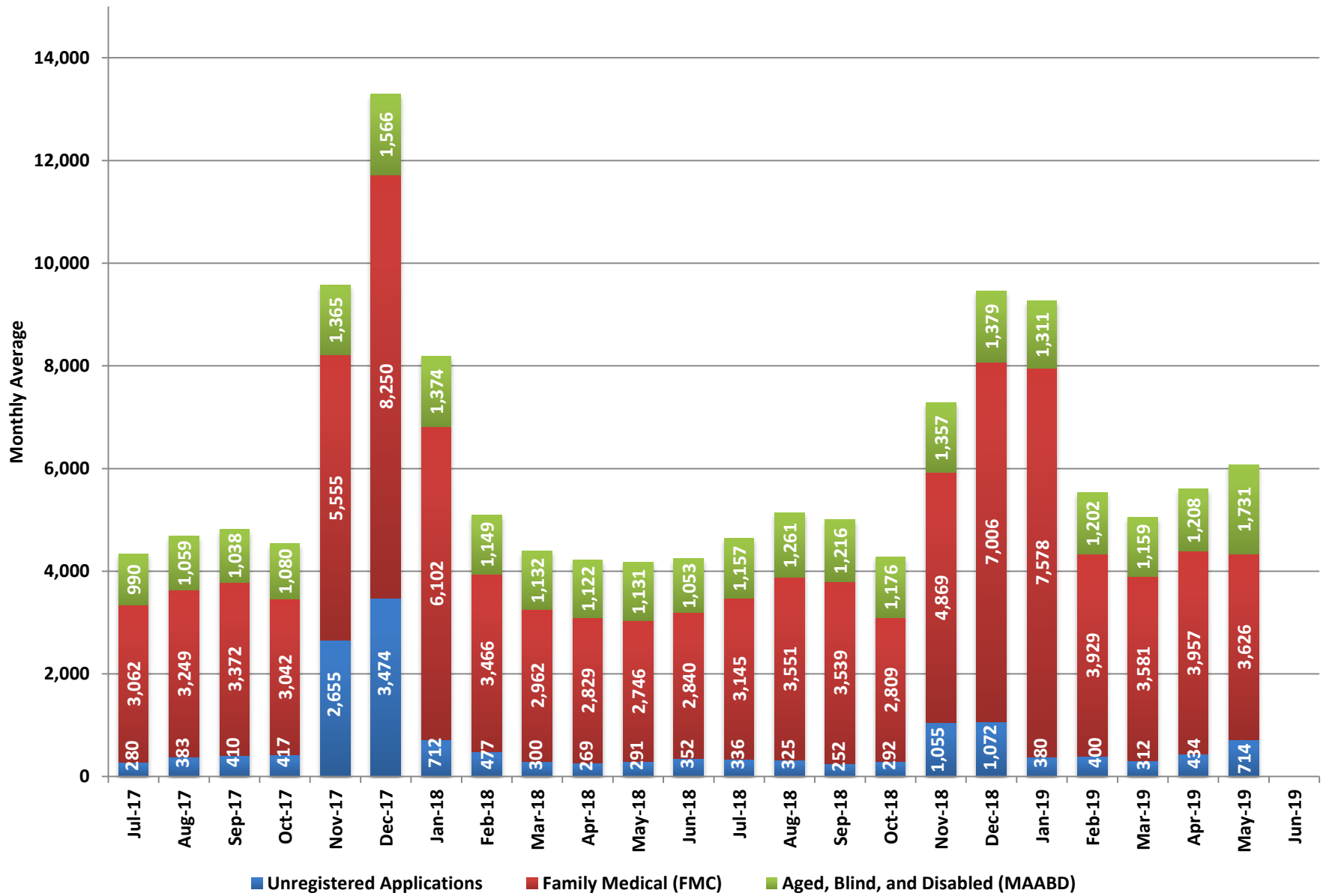
June 2019



Pending Applications

Date	Unregistered Applications	Family Medical (FMC)			Aged, Blind, and Disabled (MAABD)				Total Medicaid Pending Applications
		Pending <= 45 Days	Pending > 45 Days	Total Applications	Pending <= 45 Days	Pending 46-90 Days	Pending > 90 Days	Total Applications	
5/1/19	882	3,594	21	3,615	1,406	111	53	1,570	6,067
5/2/19	1,473	3,482	22	3,504	1,360	100	54	1,514	6,491
5/3/19	1,791	3,385	20	3,405	1,370	90	59	1,519	6,715
5/6/19	1,534	3,380	22	3,402	1,323	106	57	1,486	6,422
5/7/19	1,640	3,488	24	3,512	1,402	108	57	1,567	6,719
5/8/19	1,096	3,570	22	3,592	1,650	101	57	1,808	6,496
5/9/19	990	3,825	20	3,845	1,684	93	60	1,837	6,672
5/10/19	1,010	3,684	21	3,705	1,710	101	60	1,871	6,586
5/13/19	771	3,830	24	3,854	1,719	117	63	1,899	6,524
5/14/19	420	3,992	21	4,013	1,858	128	59	2,045	6,478
5/15/19	264	4,021	19	4,040	1,867	122	62	2,051	6,355
5/16/19	198	3,973	16	3,989	1,809	111	62	1,982	6,169
5/17/19	449	3,898	24	3,922	1,747	126	62	1,935	6,306
5/20/19	291	3,914	23	3,937	1,705	146	60	1,911	6,139
5/21/19	233	3,860	19	3,879	1,606	142	63	1,811	5,923
5/22/19	134	3,721	20	3,741	1,571	129	57	1,757	5,632
5/23/19	202	3,435	18	3,453	1,525	112	58	1,695	5,350
5/24/19	645	3,329	19	3,348	1,487	106	58	1,651	5,644
5/28/19	413	3,356	20	3,376	1,446	116	63	1,625	5,414
5/29/19	324	3,293	13	3,306	1,388	110	64	1,562	5,192
5/30/19	271	3,176	12	3,188	1,344	103	64	1,511	4,970
5/31/19	677	3,141	13	3,154	1,310	109	65	1,484	5,315

Pending Applications (Monthly Average)



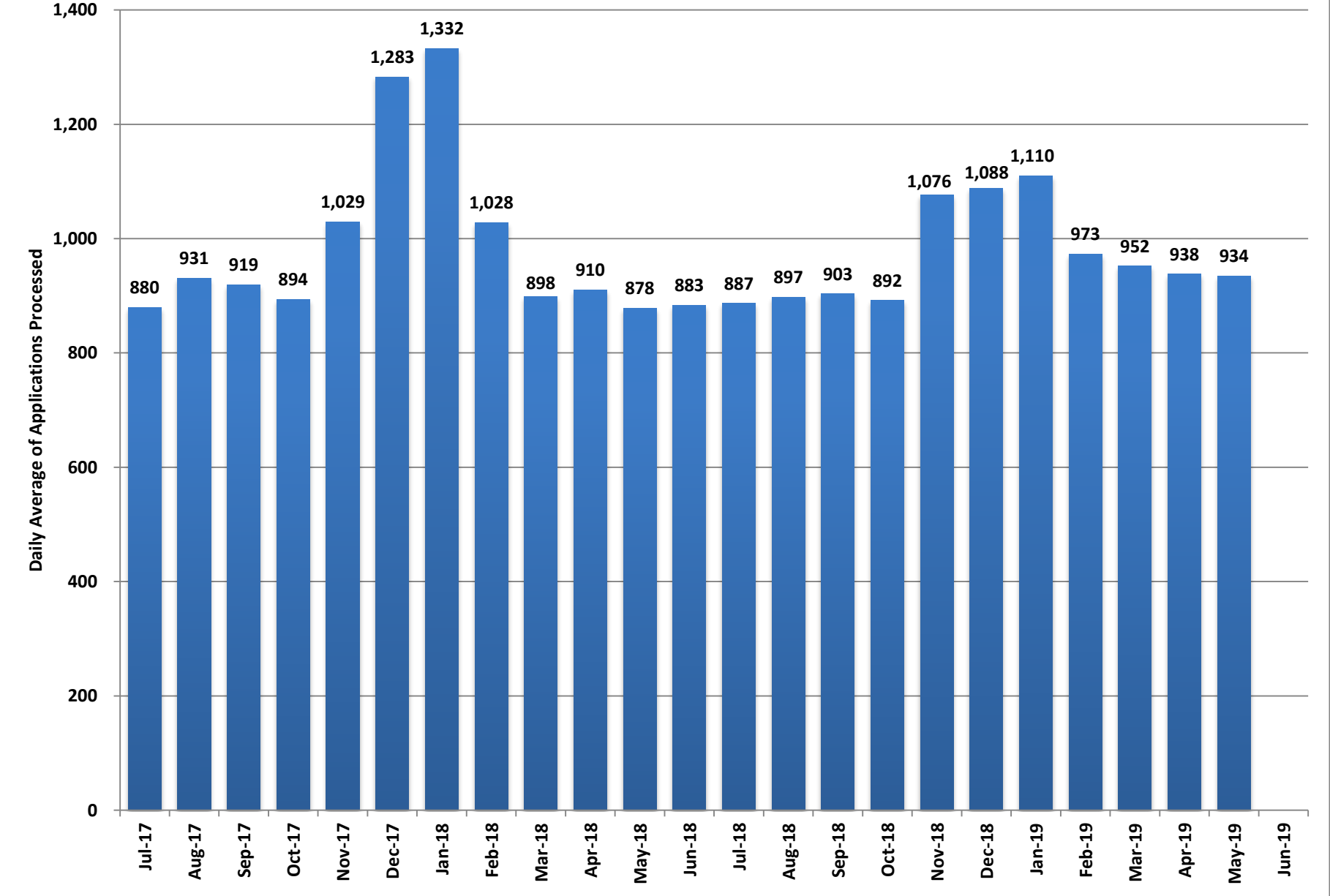
**Pending Applications
(Monthly Averages)**

Month	Unregistered Applications	Family Medical (FMC)			Aged, Blind, and Disabled (MAABD)				Total Medicaid Pending Applications
		Pending <= 45 Days	Pending > 45 Days	Total Applications	Pending <= 45 Days	Pending 46-90 Days	Pending > 90 Days	Total Applications	
Jul-17	280	3,013	49	3,062	865	81	44	990	4,333
Aug-17	383	3,203	46	3,249	942	64	53	1,059	4,690
Sep-17	410	3,304	67	3,372	908	77	54	1,038	4,819
Oct-17	417	2,967	75	3,042	939	91	51	1,080	4,539
Nov-17	2,655	5,516	39	5,555	1,211	105	48	1,365	9,575
Dec-17	3,474	8,189	61	8,250	1,419	96	51	1,566	13,290
Jan-18	712	6,027	75	6,102	1,215	108	50	1,374	8,188
Feb-18	477	3,422	44	3,466	1,020	85	44	1,149	5,093
Mar-18	300	2,926	35	2,962	999	86	47	1,132	4,394
Apr-18	269	2,803	26	2,829	985	88	48	1,122	4,219
May-18	291	2,724	22	2,746	981	95	55	1,131	4,168
Jun-18	352	2,815	25	2,840	881	118	53	1,053	4,246
Jul-18	336	3,116	29	3,145	987	112	58	1,157	4,639
Aug-18	325	3,521	30	3,551	1,097	110	55	1,261	5,137
Sep-18	252	3,505	34	3,539	1,029	127	60	1,216	5,008
Oct-18	292	2,776	33	2,809	990	124	62	1,176	4,276
Nov-18	1,055	4,834	35	4,869	1,164	124	69	1,357	7,281
Dec-18	1,072	6,962	44	7,006	1,198	102	80	1,379	9,457
Jan-19	380	7,507	71	7,578	1,125	118	68	1,311	9,269
Feb-19	400	3,856	73	3,929	1,024	113	65	1,202	5,532
Mar-19	312	3,561	20	3,581	997	106	57	1,159	5,053
Apr-19	434	3,934	23	3,957	1,058	95	55	1,208	5,599
May-19	714	3,607	20	3,626	1,559	113	60	1,731	6,072
Jun-19									

Fiscal Year Averages

Fiscal Year	Unregistered Applications	Family Medical (FMC)			Aged, Blind, and Disabled (MAABD)				Total Medicaid Pending Applications
		Pending <= 45 Days	Pending > 45 Days	Total Applications	Pending <= 45 Days	Pending 46-90 Days	Pending > 90 Days	Total Applications	
FY14	13,681	7,925	8,462	16,387	2,094	1,197	5,355	8,646	35,324
FY15	3,376	6,810	3,357	10,167	1,369	498	1,129	2,997	16,405
FY16	797	4,150	28	4,178	974	162	271	1,407	6,382
FY17	486	3,961	27	3,988	938	84	56	1,079	5,552
FY18	835	3,909	47	3,956	1,030	91	50	1,172	5,963
FY19 YTD	507	4,289	37	4,327	1,111	113	62	1,287	6,120

Medicaid Applications Processed per Working Day

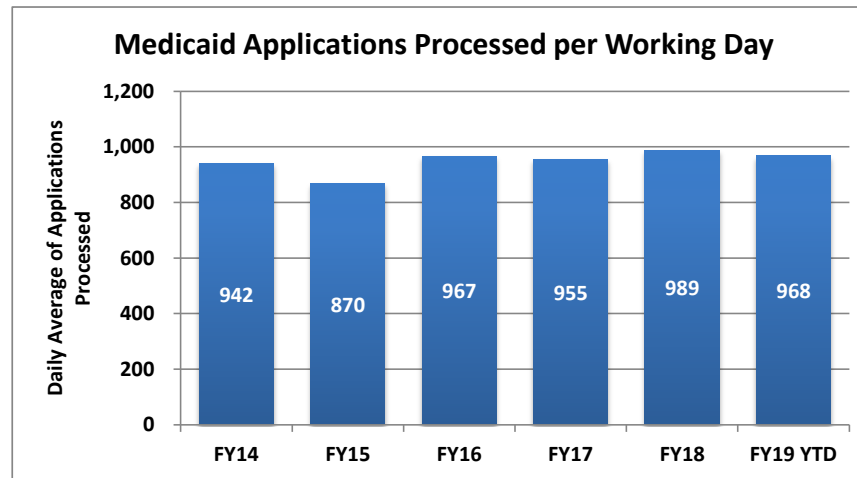


Pending Applications Processed Per Day

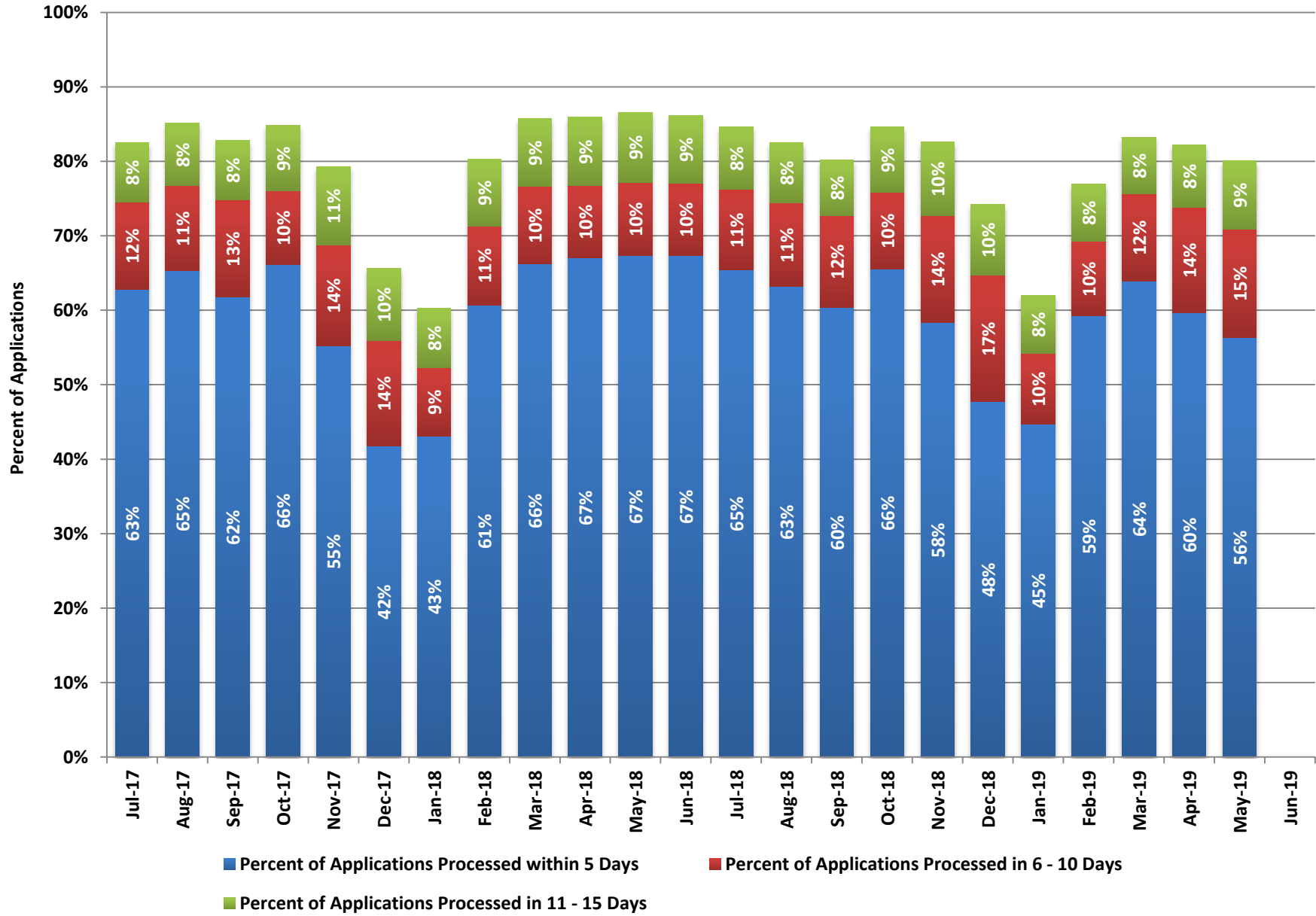
Month	Medicaid Applications Processed per Working Day
Jul-17	880
Aug-17	931
Sep-17	919
Oct-17	894
Nov-17	1,029
Dec-17	1,283
Jan-18	1,332
Feb-18	1,028
Mar-18	898
Apr-18	910
May-18	878
Jun-18	883
Jul-18	887
Aug-18	897
Sep-18	903
Oct-18	892
Nov-18	1,076
Dec-18	1,088
Jan-19	1,110
Feb-19	973
Mar-19	952
Apr-19	938
May-19	934
Jun-19	

Fiscal Year Averages

Fiscal Year	Medicaid Applications Processed per Working Day
FY14	942
FY15	870
FY16	967
FY17	955
FY18	989
FY19 YTD	968



Applications Processed within 15 Days



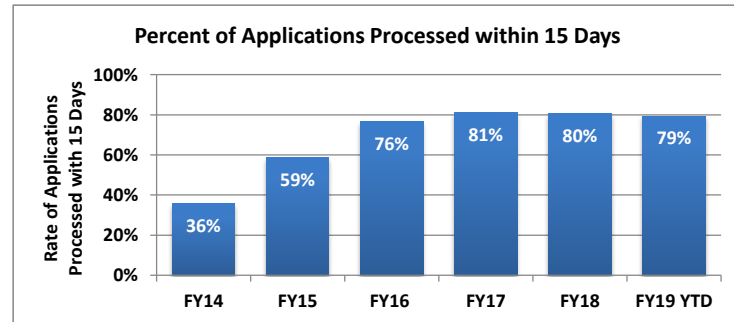
Applications Processed Within 15 Days

Month	Applications Processed within 5 Days	Percent of Applications Processed within 5 Days	Applications Processed in 6 - 10 Days	Percent of Applications Processed in 6 - 10 Days	Applications Processed in 11 - 15 Days	Percent of Applications Processed in 11 - 15 Days	Applications Processed within 15 Days	Total Applications Processed	Percent of Applications Processed within 15 Days
Jul-17	11,055	63%	2,065	12%	1,407	8%	14,527	17,594	83%
Aug-17	13,970	65%	2,438	11%	1,800	8%	18,208	21,403	85%
Sep-17	11,351	62%	2,386	13%	1,474	8%	15,211	18,376	83%
Oct-17	12,397	66%	1,849	10%	1,644	9%	15,890	18,765	85%
Nov-17	10,782	55%	2,663	14%	2,050	11%	15,495	19,544	79%
Dec-17	10,728	42%	3,615	14%	2,498	10%	16,841	25,651	66%
Jan-18	12,064	43%	2,565	9%	2,226	8%	16,855	27,969	60%
Feb-18	11,850	61%	2,068	11%	1,762	9%	15,680	19,523	80%
Mar-18	13,085	66%	2,053	10%	1,804	9%	16,942	19,757	86%
Apr-18	12,796	67%	1,851	10%	1,765	9%	16,412	19,104	86%
May-18	12,992	67%	1,912	10%	1,809	9%	16,713	19,306	87%
Jun-18	12,472	67%	1,823	10%	1,660	9%	15,955	18,544	86%
Jul-18	12,174	65%	2,019	11%	1,558	8%	15,751	18,619	85%
Aug-18	13,040	63%	2,303	11%	1,667	8%	17,010	20,634	82%
Sep-18	10,360	60%	2,115	12%	1,284	8%	13,759	17,158	80%
Oct-18	12,842	66%	2,030	10%	1,731	9%	16,603	19,615	85%
Nov-18	11,928	58%	2,932	14%	2,023	10%	16,883	20,445	83%
Dec-18	10,370	48%	3,691	17%	2,078	10%	16,139	21,742	74%
Jan-19	10,412	45%	2,219	10%	1,801	8%	14,432	23,296	62%
Feb-19	10,948	59%	1,850	10%	1,419	8%	14,217	18,480	77%
Mar-19	12,767	64%	2,337	12%	1,529	8%	16,633	19,979	83%
Apr-19	12,319	60%	2,914	14%	1,735	8%	16,968	20,629	82%
May-19	11,575	56%	2,994	15%	1,888	9%	16,457	20,551	80%
Jun-19									

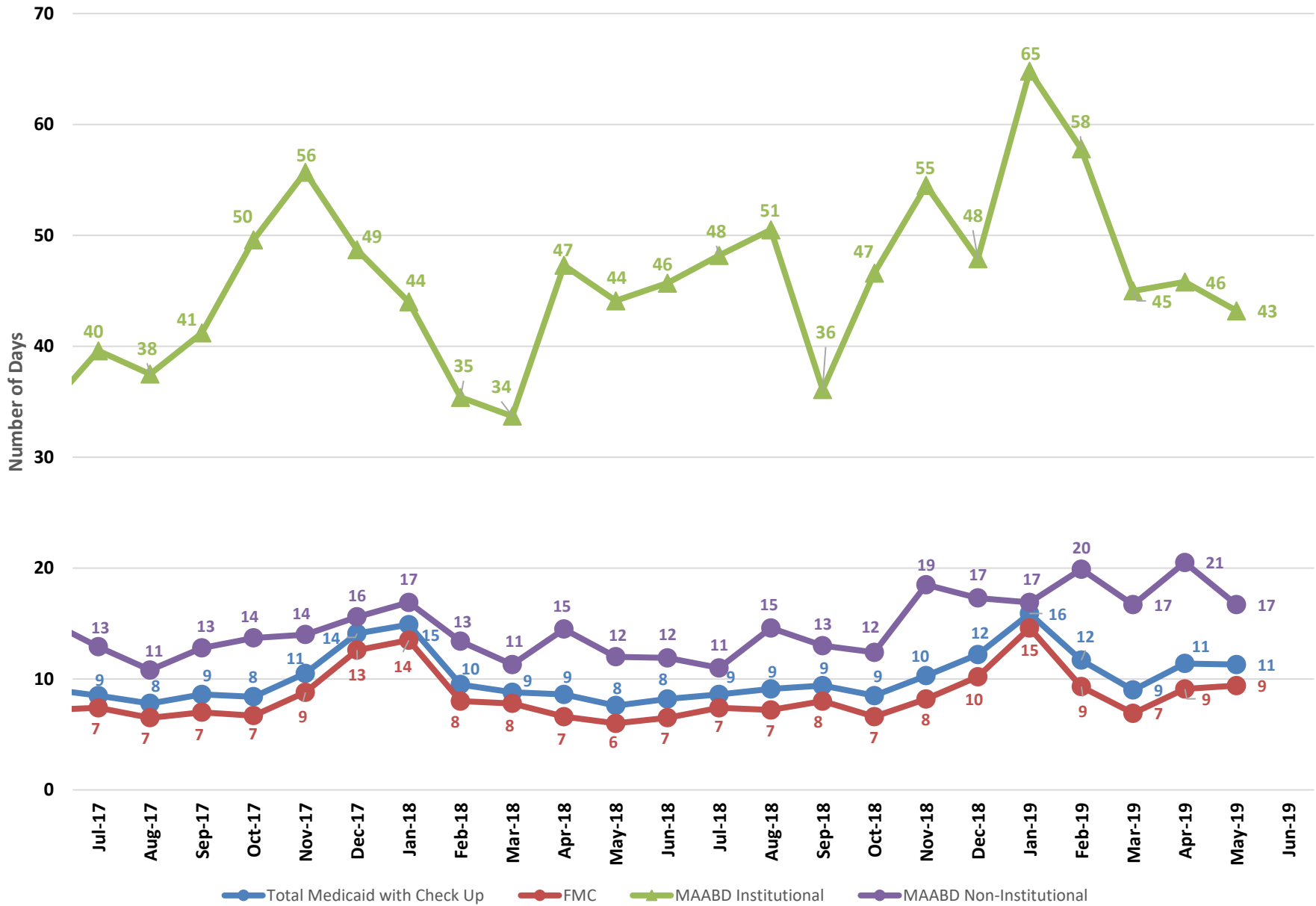
Note: This data reflects Family Medical (FMC), Newly Eligible Adults, Aged, Blind and Disabled (MAABD), and Nevada Check Up applications.

Percent of Applications Processed within 15 Days - Fiscal Year Averages

Fiscal Year	% within 15 Days
FY14	36%
FY15	59%
FY16	76%
FY17	81%
FY18	80%
FY19 YTD	79%



Average Processing Time (Days)

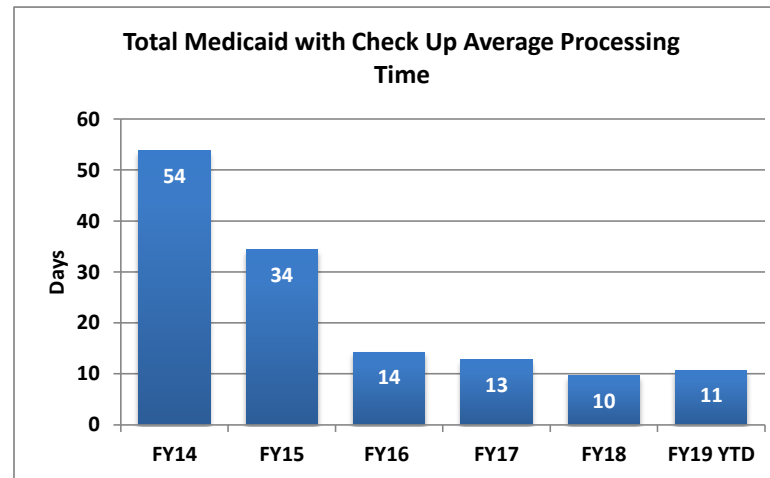


Average Processing Times (Days)

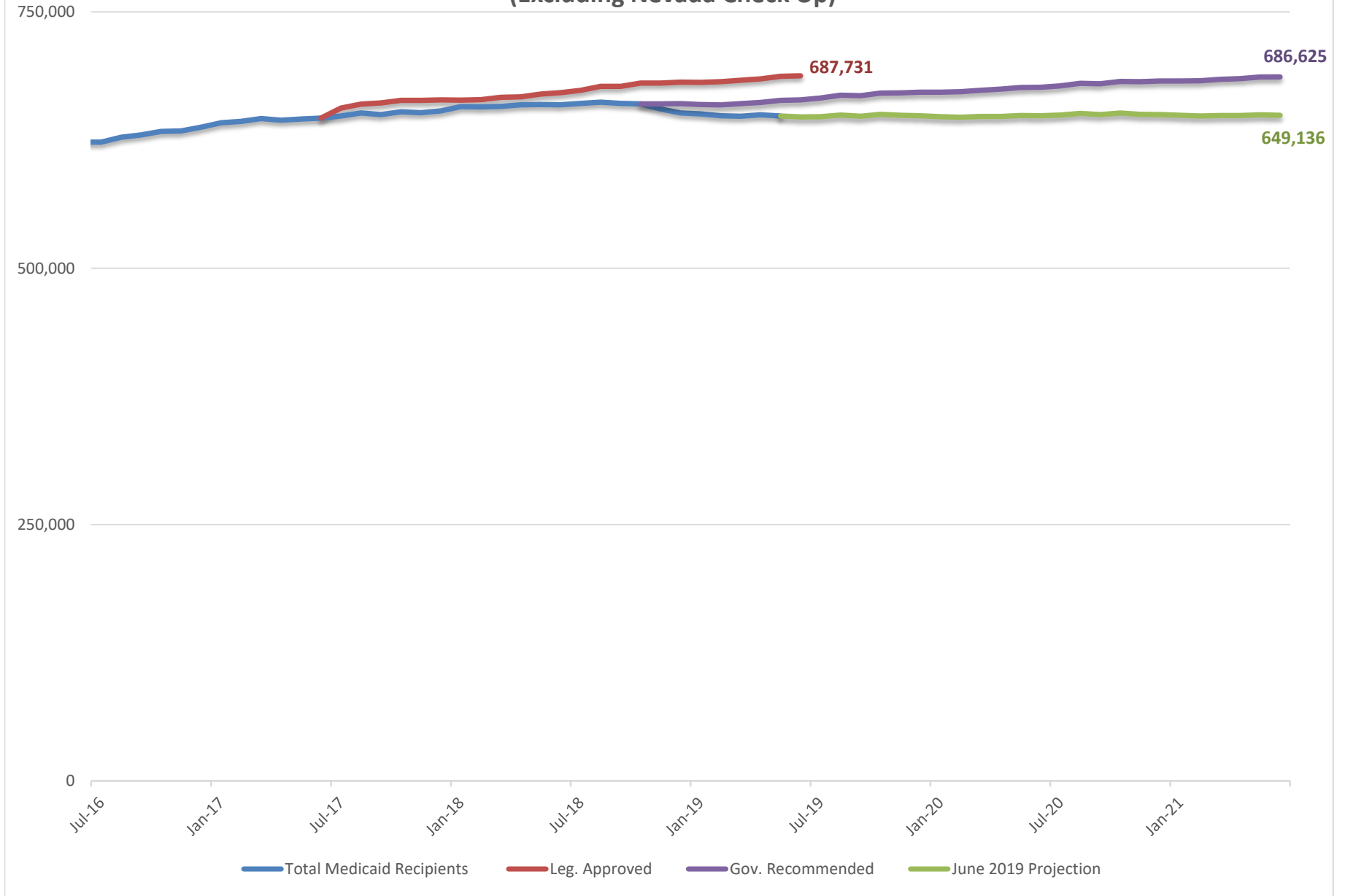
Month	Total Medicaid with Check Up	FMC	MAABD Institutional	MAABD Non-Institutional
Jul-17	9	7	40	13
Aug-17	8	7	38	11
Sep-17	9	7	41	13
Oct-17	8	7	50	14
Nov-17	11	9	56	14
Dec-17	14	13	49	16
Jan-18	15	14	44	17
Feb-18	10	8	35	13
Mar-18	9	8	34	11
Apr-18	9	7	47	15
May-18	8	6	44	12
Jun-18	8	7	46	12
Jul-18	9	7	48	11
Aug-18	9	7	51	15
Sep-18	9	8	36	13
Oct-18	9	7	47	12
Nov-18	10	8	55	19
Dec-18	12	10	48	17
Jan-19	16	15	65	17
Feb-19	12	9	58	20
Mar-19	9	7	45	17
Apr-19	11	9	46	21
May-19	11	9	43	17
Jun-19				

Fiscal Year Averages

Fiscal Year	Total Medicaid with Check Up	FMC	MAABD Institutional	MAABD Non-Institutional
FY14	54			
FY15	34	22	69	45
FY16	14	10	63	30
FY17	13	12	51	14
FY18	10	8	44	13
FY19 YTD	11	9	49	16



Total Medicaid Recipients (Excluding Nevada Check Up)



Total Medicaid Recipients (Excluding Nevada Check Up)

FY16 & FY17 Biennium

Month	Total Medicaid Recipients
Jul-15	582,531
Aug-15	586,654
Sep-15	594,359
Oct-15	599,701
Nov-15	602,421
Dec-15	608,812
Jan-16	614,216
Feb-16	620,541
Mar-16	623,109
Apr-16	621,250
May-16	622,259
Jun-16	622,986
Jul-16	623,002
Aug-16	627,802
Sep-16	629,956
Oct-16	633,535
Nov-16	634,037
Dec-16	637,501
Jan-17	642,028
Feb-17	643,194
Mar-17	645,963
Apr-17	644,535
May-17	645,540
Jun-17	646,464

FY18 & FY19 Biennium

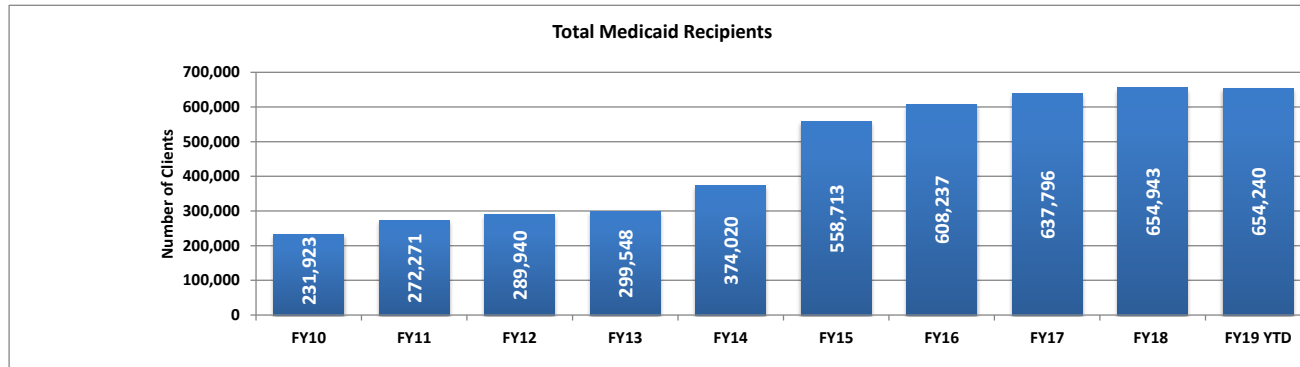
Month	Total Medicaid Recipients	Leg. Approved	Gov. Recommended	June 2019 Projection
Jul-17	648,513	656,163		
Aug-17	651,526	660,148		
Sep-17	650,002	661,255		
Oct-17	652,613	663,747		
Nov-17	651,756	663,722		
Dec-17	653,456	664,345		
Jan-18	657,620	664,076		
Feb-18	657,515	664,436		
Mar-18	657,751	666,637		
Apr-18	659,505	667,258		
May-18	659,677	669,834		
Jun-18	659,387	671,362		
Jul-18	660,791	673,606		
Aug-18	661,988	677,370		
Sep-18	660,881	677,385		
Oct-18	660,477	680,535	660,456	
Nov-18	655,369	680,603	660,434	
Dec-18	651,512	681,627	660,539	
Jan-19	650,494	681,422	659,636	
Feb-19	648,640	681,965	659,343	
Mar-19	648,272	683,378	660,620	
Apr-19	649,630	684,779	661,689	
May-19	648,583	687,226	663,795	648,583
Jun-19		687,731	664,337	647,607

FY20 & FY21 Biennium

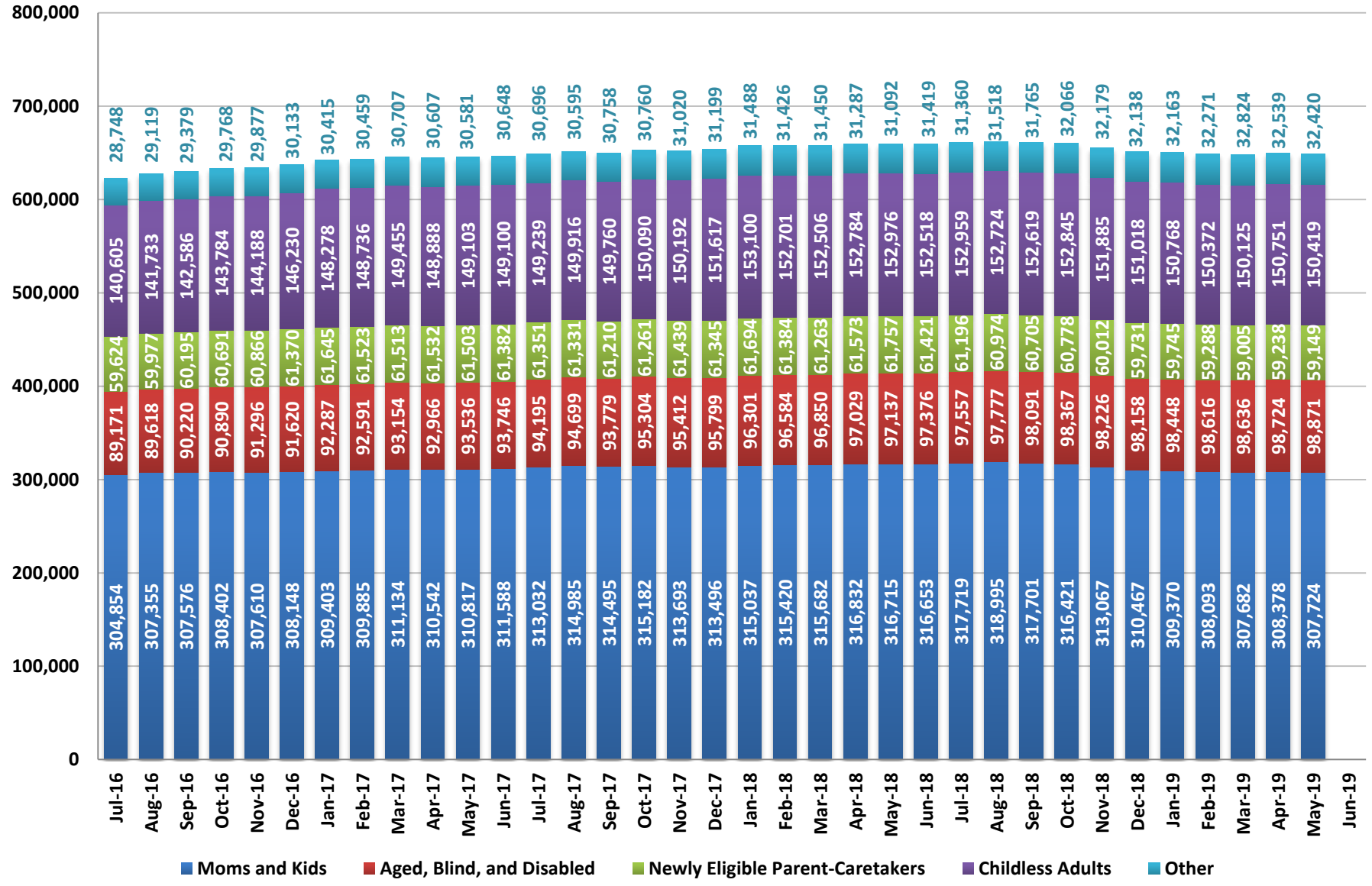
Month	Gov. Recommended	June 2019 Projection
Jul-19	666,029	647,868
Aug-19	668,822	649,432
Sep-19	668,417	648,221
Oct-19	670,945	650,162
Nov-19	670,994	649,164
Dec-19	671,822	648,830
Jan-20	671,775	647,942
Feb-20	672,129	647,290
Mar-20	673,641	648,030
Apr-20	674,636	648,100
May-20	676,310	649,051
Jun-20	676,534	648,698
Jul-20	678,003	649,375
Aug-20	680,417	651,032
Sep-20	679,879	649,838
Oct-20	682,244	651,395
Nov-20	682,068	650,230
Dec-20	682,766	649,922
Jan-21	682,609	649,128
Feb-21	682,823	648,532
Mar-21	684,222	649,060
Apr-21	685,023	648,914
May-21	686,537	649,696
Jun-21	686,625	649,136

Fiscal Year Averages

Fiscal Year	Total Medicaid Recipients	Percent Change
FY10	231,923	
FY11	272,271	17.4%
FY12	289,940	6.5%
FY13	299,548	3.3%
FY14	374,020	24.9%
FY15	558,713	49.4%
FY16	608,237	8.9%
FY17	637,796	4.9%
FY18	654,943	2.7%
FY19 YTD	654,240	-0.1%



Medicaid Caseloads by Category (Excluding Nevada Check Up)



Medicaid Caseloads (Excluding Nevada Check Up)

Caseload by Month

Month	Moms and Kids	Aged, Blind, and Disabled	Newly Eligible Parent-Caretakers	Childless Adults	Other	Total
Jul-16	304,854	89,171	59,624	140,605	28,748	623,002
Aug-16	307,355	89,618	59,977	141,733	29,119	627,802
Sep-16	307,576	90,220	60,195	142,586	29,379	629,956
Oct-16	308,402	90,890	60,691	143,784	29,768	633,535
Nov-16	307,610	91,296	60,866	144,188	29,877	633,837
Dec-16	308,148	91,620	61,370	146,230	30,133	637,501
Jan-17	309,403	92,287	61,645	148,278	30,415	642,028
Feb-17	309,885	92,591	61,523	148,736	30,459	643,194
Mar-17	311,134	93,154	61,513	149,455	30,707	645,963
Apr-17	310,542	92,966	61,532	148,888	30,607	644,535
May-17	310,817	93,536	61,503	149,103	30,581	645,540
Jun-17	311,588	93,746	61,382	149,100	30,648	646,464
Jul-17	313,032	94,195	61,351	149,239	30,696	648,513
Aug-17	314,985	94,699	61,331	149,916	30,595	651,526
Sep-17	314,495	93,779	61,210	149,760	30,758	650,002
Oct-17	315,182	95,304	61,261	150,090	30,760	652,597
Nov-17	313,693	95,412	61,439	150,192	31,020	651,756
Dec-17	313,496	95,799	61,345	151,617	31,199	653,456
Jan-18	315,037	96,301	61,694	153,100	31,488	657,620
Feb-18	315,420	96,584	61,384	152,701	31,426	657,515
Mar-18	315,682	96,850	61,263	152,506	31,450	657,751
Apr-18	316,832	97,029	61,573	152,784	31,287	659,505
May-18	316,715	97,137	61,757	152,976	31,092	659,677
Jun-18	316,653	97,376	61,421	152,518	31,419	659,387
Jul-18	317,719	97,557	61,196	152,959	31,360	660,791
Aug-18	318,995	97,777	60,974	152,724	31,518	661,988
Sep-18	317,701	98,091	60,705	152,619	31,765	660,881
Oct-18	316,421	98,367	60,778	152,845	32,066	660,477
Nov-18	313,067	98,226	60,012	151,885	32,179	655,369
Dec-18	310,467	98,158	59,731	151,018	32,138	651,512
Jan-19	309,370	98,448	59,745	150,768	32,163	650,494
Feb-19	308,093	98,616	59,288	150,372	32,271	648,640
Mar-19	307,682	98,636	59,005	150,125	32,824	648,272
Apr-19	308,378	98,724	59,238	150,751	32,539	649,630
May-19	307,724	98,871	59,149	150,419	32,420	648,583
Jun-19						

Fiscal Year Average Caseload

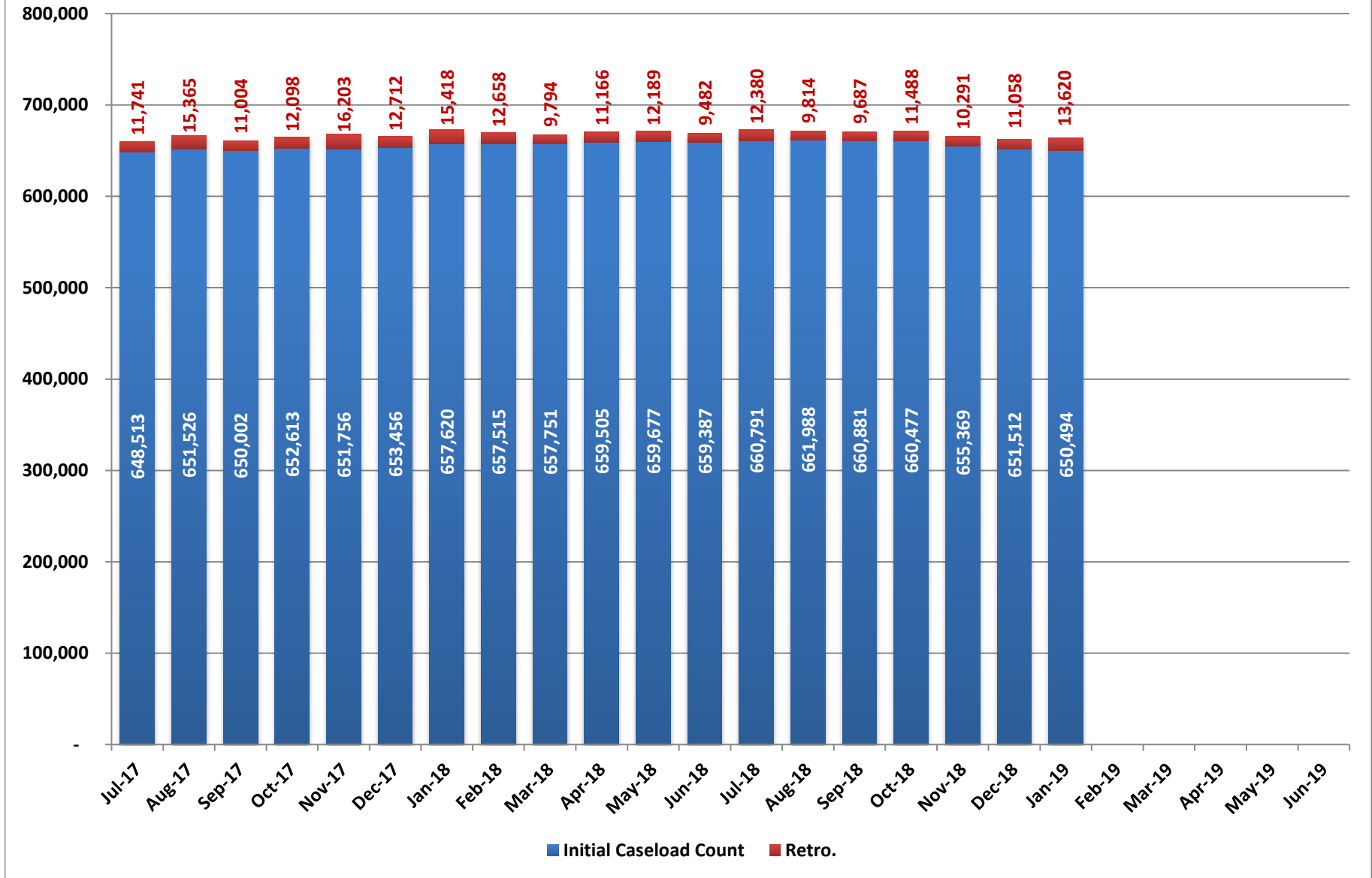
Fiscal Year	Moms and Kids	Aged, Blind, and Disabled	Newly Eligible Parent-Caretakers	Childless Adults	Other	Total
FY14	247,913	72,442	11,353	25,852	16,470	374,031
FY15	291,013	79,931	47,528	116,729	23,526	558,726
FY16	299,439	85,818	58,284	136,771	27,871	608,182
FY17	308,943	91,758	60,985	146,057	30,036	637,779
FY18	315,102	95,872	61,419	151,450	31,099	654,942
FY19 YTD	312,329	98,316	59,984	151,499	32,113	654,240

Month over Month Change in Caseload

Month	Moms and Kids	Aged, Blind, and Disabled	Newly Eligible Parent-Caretakers	Childless Adults	Other	Total
Jul-16	547	511	(490)	(523)	17	62
Aug-16	2,501	447	353	1,128	371	4,800
Sep-16	221	602	218	853	260	2,154
Oct-16	826	670	496	1,198	389	3,579
Nov-16	(792)	406	175	404	109	302
Dec-16	538	324	504	2,042	256	3,664
Jan-17	1,255	667	275	2,048	282	4,527
Feb-17	482	304	(122)	458	44	1,166
Mar-17	1,249	563	(10)	719	248	2,769
Apr-17	(592)	(188)	19	(567)	(100)	(1,428)
May-17	275	570	(29)	215	(26)	1,005
Jun-17	771	210	(121)	(3)	67	924
Jul-17	1,444	449	(31)	139	48	2,049
Aug-17	1,953	504	(20)	677	(101)	3,013
Sep-17	(490)	(920)	(121)	(156)	163	(1,524)
Oct-17	687	1,525	51	330	2	2,595
Nov-17	(1,489)	108	178	102	260	(841)
Dec-17	(197)	387	(94)	1,425	179	1,700
Jan-18	1,541	502	349	1,483	289	4,164
Feb-18	383	283	(310)	(399)	(62)	(105)
Mar-18	262	266	(121)	(195)	24	236
Apr-18	1,150	179	310	278	(163)	1,754
May-18	(117)	108	184	192	(195)	172
Jun-18	(62)	239	(336)	(458)	327	(290)
Jul-18	1,066	181	(225)	441	(59)	1,404
Aug-18	1,276	220	(222)	(235)	158	1,197
Sep-18	(1,294)	314	(269)	(105)	247	(1,107)
Oct-18	(1,280)	276	73	226	301	(404)
Nov-18	(3,354)	(141)	(766)	(960)	113	(5,108)
Dec-18	(2,600)	(68)	(281)	(867)	(41)	(3,857)
Jan-19	(1,097)	290	14	(250)	25	(1,018)
Feb-19	(1,277)	168	(457)	(396)	108	(1,854)
Mar-19	(411)	20	(283)	(247)	553	(368)
Apr-19	696	88	233	626	(285)	1,358
May-19	(654)	147	(89)	(332)	(119)	(1,047)
Jun-19						

Note: Other includes Child Welfare, County Match, Waivers, CHIP to Medicaid, and other minor caseloads.

Total Medicaid - Initial and Retroactive Caseload Counts (Excluding Nevada Check Up)



**Total Medicaid - Initial and Retroactive Caseload Counts
(Excluding Nevada Check up)**

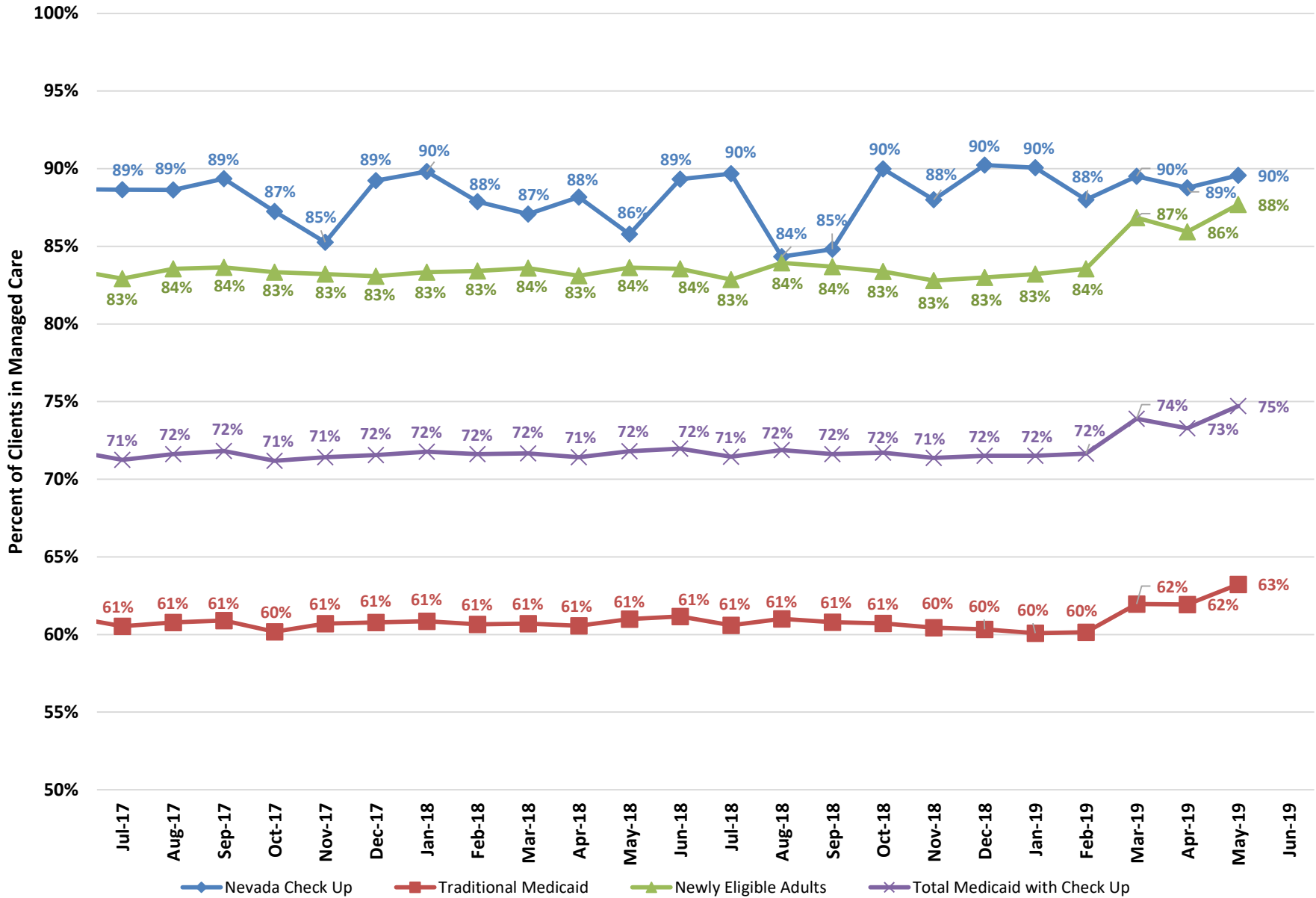
	FMC				Aged				Blind and Disabled				Total MAABD				Total Medicaid			
	Initial Caseload Count	Retro.	Caseload with Retro.	% Retro.	Initial Caseload Count	Retro.	Caseload with Retro.	% Retro	Initial Caseload Count	Retro.	Caseload with Retro.	% Retro	Initial Caseload Count	Retro.	Caseload with Retro.	% Retro	Initial Caseload Count	Retro.	Caseload with Retro.	% Retro
Jul-17	537,079	10,372	547,451	1.9%	12,834	143	12,977	1.1%	41,969	367	42,336	0.9%	100,584	1,249	101,833	1.2%	648,513	11,741	660,254	1.8%
Aug-17	539,698	13,901	553,599	2.6%	12,893	134	13,027	1.0%	42,177	449	42,626	1.1%	101,116	1,319	102,435	1.3%	651,526	15,365	666,891	2.4%
Sep-17	538,976	9,652	548,628	1.8%	12,674	163	12,837	1.3%	41,364	339	41,703	0.8%	100,124	1,206	101,330	1.2%	650,002	11,004	661,006	1.7%
Oct-17	540,063	10,313	550,376	1.9%	12,966	262	13,228	2.0%	42,260	578	42,838	1.4%	101,672	1,649	103,321	1.6%	652,613	12,098	664,711	1.9%
Nov-17	538,882	14,764	553,646	2.7%	12,972	175	13,147	1.4%	42,221	381	42,602	0.9%	101,787	1,323	103,110	1.3%	651,756	16,203	667,959	2.5%
Dec-17	540,244	11,442	551,686	2.1%	13,066	165	13,231	1.3%	42,252	317	42,569	0.7%	102,164	1,144	103,308	1.1%	653,456	12,712	666,168	1.9%
Jan-18	543,745	13,932	557,677	2.6%	13,128	179	13,307	1.4%	42,322	426	42,748	1.0%	102,652	1,323	103,975	1.3%	657,620	15,418	673,038	2.3%
Feb-18	543,323	11,386	554,709	2.1%	13,159	133	13,292	1.0%	42,297	380	42,677	0.9%	103,000	1,141	104,141	1.1%	657,515	12,658	670,173	1.9%
Mar-18	543,242	8,573	551,815	1.6%	13,225	183	13,408	1.4%	42,370	330	42,700	0.8%	103,256	1,088	104,344	1.1%	657,751	9,794	667,545	1.5%
Apr-18	544,962	9,870	554,832	1.8%	13,220	155	13,375	1.2%	42,429	347	42,776	0.8%	103,481	1,140	104,621	1.1%	659,505	11,166	670,671	1.7%
May-18	544,915	10,940	555,855	2.0%	13,275	127	13,402	1.0%	42,361	327	42,688	0.8%	103,627	1,074	104,701	1.0%	659,677	12,189	671,866	1.8%
Jun-18	544,170	8,314	552,484	1.5%	13,335	131	13,466	1.0%	42,340	307	42,647	0.7%	103,911	1,023	104,934	1.0%	659,387	9,482	668,869	1.4%
Jul-18	545,367	11,163	556,530	2.0%	13,373	114	13,487	0.8%	42,289	337	42,626	0.8%	104,109	1,060	105,169	1.0%	660,791	12,380	673,171	1.9%
Aug-18	546,202	8,742	554,944	1.6%	13,458	122	13,580	0.9%	42,318	270	42,588	0.6%	104,400	918	105,318	0.9%	661,988	9,814	671,802	1.5%
Sep-18	544,785	8,646	553,431	1.6%	13,509	96	13,605	0.7%	42,338	256	42,594	0.6%	104,719	889	105,608	0.8%	660,881	9,687	670,568	1.5%
Oct-18	543,977	10,329	554,306	1.9%	13,612	115	13,727	0.8%	42,607	301	42,908	0.7%	105,071	985	106,056	0.9%	660,477	11,488	671,965	1.7%
Nov-18	538,927	9,282	548,209	1.7%	13,618	116	13,734	0.8%	42,326	249	42,575	0.6%	104,942	848	105,790	0.8%	655,369	10,291	665,660	1.6%
Dec-18	535,062	10,217	545,279	1.9%	13,640	98	13,738	0.7%	42,108	247	42,355	0.6%	104,887	727	105,614	0.7%	651,512	11,058	662,570	1.7%
Jan-19	533,782	12,727	546,509	2.4%	13,690	72	13,762	0.5%	42,185	296	42,481	0.7%	105,151	799	105,950	0.8%	650,494	13,620	664,114	2.1%
Feb-19	531,767				13,735				42,139				105,346				648,640			
Mar-19	530,912				13,811				41,983				105,359				648,272			
Apr-19	532,249				13,892				41,859				105,461				649,630			
May-19																				
Jun-19																				
Jul-19																				

Fiscal Year Averages

Fiscal Year	FMC				Aged				Blind and Disabled				Total MAABD				Total Medicaid			
	Initial Caseload Count	Retro.	Caseload with Retro.	% Retro.	Initial Caseload Count	Retro.	Caseload with Retro.	% Retro	Initial Caseload Count	Retro.	Caseload with Retro.	% Retro	Initial Caseload Count	Retro.	Caseload with Retro.	% Retro	Initial Caseload Count	Retro.	Caseload with Retro.	% Retro
FY14	287,197	33,884	321,081	11.1%	10,974	298	11,272	2.7%	34,629	1,380	36,009	4.0%	77,858	2,402	80,260	3.1%	374,043	36,454	410,497	9.3%
FY15	463,507	20,609	484,116	4.5%	11,623	243	11,866	2.1%	37,622	537	38,159	1.4%	85,646	1,523	87,169	1.8%	558,774	22,319	581,092	4.0%
FY16	505,872	12,322	518,194	2.4%	12,181	173	12,355	1.4%	39,686	352	40,037	0.9%	91,761	1,159	92,920	1.3%	608,237	13,600	621,837	2.2%
FY17	529,040	11,158	540,198	2.1%	12,699	172	12,870	1.4%	41,562	329	41,891	0.8%	97,926	993	98,919	1.0%	637,798	12,258	650,056	1.9%
FY18	541,608	11,121	552,730	2.1%	13,062	163	13,225	1.2%	42,197	379	42,576	0.9%	102,281	1,223	103,504	1.2%	654,943	12,486	667,429	1.9%
FY19 TYD	538,303	10,158	551,315	1.9%	13,634	105	13,662	0.8%	42,215	279	42,590	0.7%	104,945	889	105,644	0.8%	654,805	11,191	668,550	1.7%

Retro numbers were not updated after January 2019 due to the implementation of the new data warehouse system.

Percent in Managed Care by Client Type

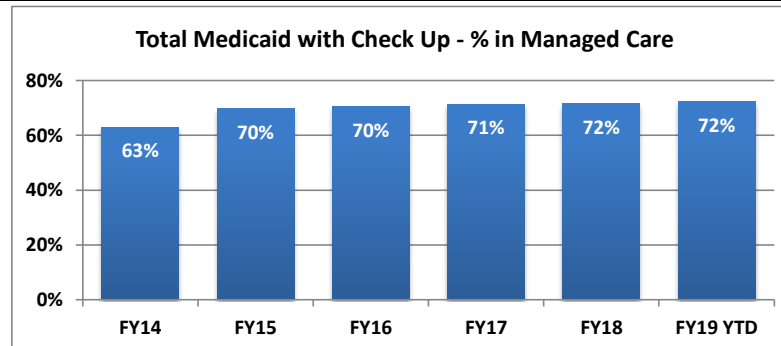


Percent of Medicaid Clients in Managed Care

Month	Nevada Check Up			Traditional Medicaid			Newly Eligible Adults			Total Medicaid with Check Up		
	Managed Care Enrollment	Total Caseload	% in Managed Care	Managed Care Enrollment	Total Caseload net of SLMB	% in Managed Care	Managed Care Enrollment	Total Caseload	% in Managed Care	Managed Care Enrollment	Total Caseload net of SLMB	% in Managed Care
Jul-17	23,375	26,369	89%	271,098	447,823	61%	175,004	211,060	83%	469,477	658,883	71%
Aug-17	23,581	26,604	89%	273,685	450,312	61%	176,921	211,736	84%	474,187	662,048	72%
Sep-17	24,067	26,935	89%	273,748	449,444	61%	176,858	211,428	84%	474,673	660,872	72%
Oct-17	24,008	27,515	87%	272,130	452,179	60%	176,515	211,805	83%	472,653	663,984	71%
Nov-17	23,338	27,372	85%	273,716	450,947	61%	176,442	212,028	83%	473,496	662,975	71%
Dec-17	23,950	26,842	89%	273,938	450,648	61%	177,263	213,384	83%	475,151	664,032	72%
Jan-18	24,531	27,314	90%	275,856	453,285	61%	179,385	215,236	83%	479,772	668,521	72%
Feb-18	24,452	27,825	88%	275,591	454,337	61%	178,985	214,570	83%	479,028	668,907	72%
Mar-18	24,289	27,893	87%	276,151	454,917	61%	179,117	214,266	84%	479,557	669,183	72%
Apr-18	24,435	27,713	88%	276,052	455,809	61%	178,554	214,869	83%	479,041	670,678	71%
May-18	23,861	27,813	86%	277,963	455,730	61%	179,883	215,101	84%	481,707	670,831	72%
Jun-18	24,479	27,406	89%	278,584	455,512	61%	179,198	214,489	84%	482,261	670,001	72%
Jul-18	25,170	28,066	90%	277,091	457,264	61%	177,917	214,714	83%	480,178	671,978	71%
Aug-18	24,129	28,608	84%	280,235	459,334	61%	179,828	214,260	84%	484,192	673,594	72%
Sep-18	23,769	28,027	85%	278,434	457,989	61%	178,996	213,869	84%	481,199	671,858	72%
Oct-18	25,328	28,144	90%	277,632	457,284	61%	178,585	214,196	83%	481,545	671,480	72%
Nov-18	25,466	28,937	88%	274,842	454,758	60%	175,882	212,434	83%	476,190	667,192	71%
Dec-18	26,276	29,122	90%	272,818	452,153	60%	175,351	211,278	83%	474,445	663,431	72%
Jan-19	26,921	29,890	90%	271,637	452,063	60%	175,632	211,069	83%	474,190	663,132	72%
Feb-19	26,916	30,588	88%	271,727	451,736	60%	175,640	210,227	84%	474,283	661,963	72%
Mar-19	26,721	29,854	90%	279,501	451,066	62%	182,154	209,747	87%	488,376	660,813	74%
Apr-19	24,278	27,350	89%	278,102	449,054	62%	180,985	210,608	86%	483,365	659,662	73%
May-19	24,110	26,917	90%	283,220	447,878	63%	184,306	210,158	88%	491,636	658,036	75%
Jun-19												

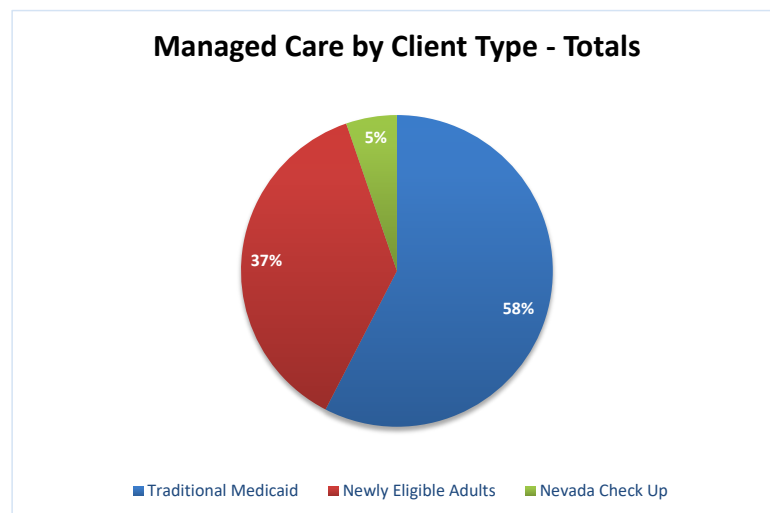
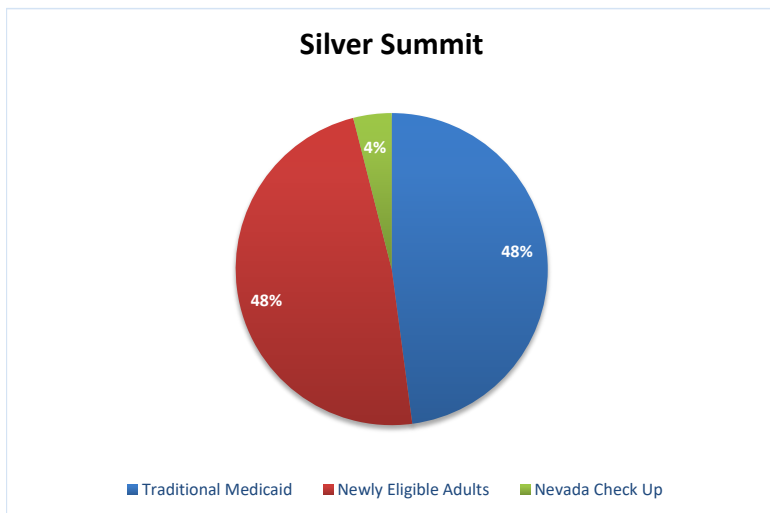
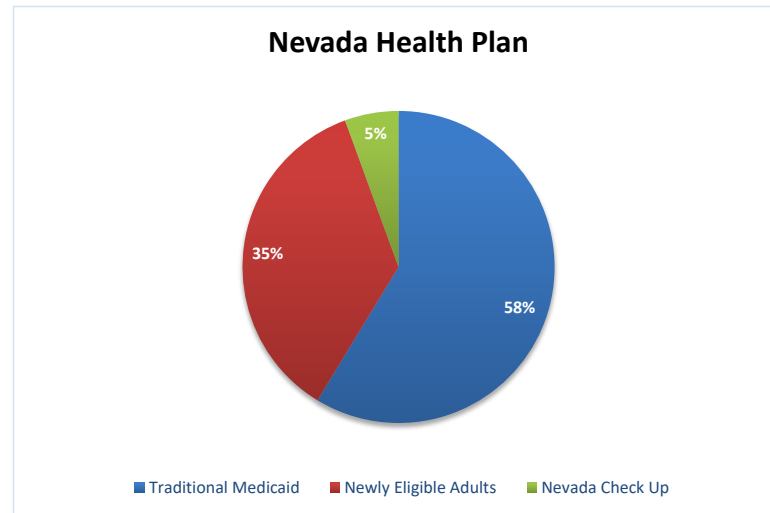
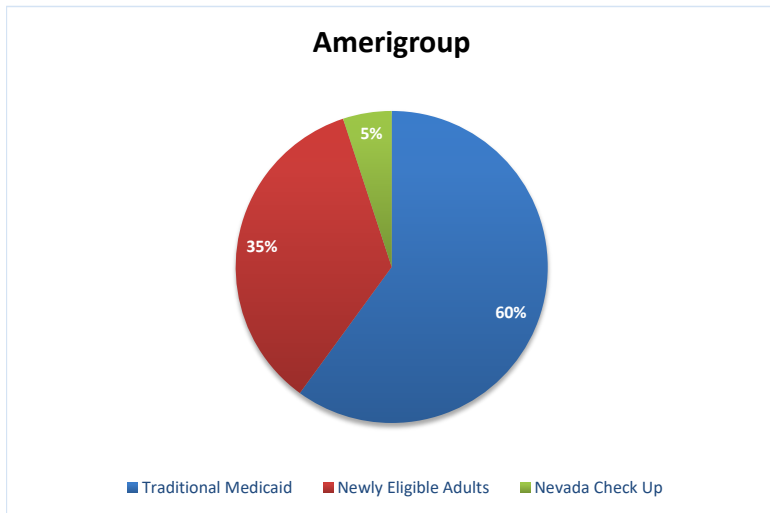
Fiscal Year Averages

	Managed Care Enrollment	% in Managed Care
FY14	243,142	63%
FY15	395,743	70%
FY16	437,740	70%
FY17	462,312	71%
FY18	476,750	72%
FY19 YTD	480,873	72%



Note: Traditional Medicaid totals include both cat 11 (CHIP Expansion), and cat 12 (TANF/CHAP) populations.

Managed Care by Client Type Fiscal Year 2019 YTD



Managed Care Providers

Month	Amerigroup								Health Plan of Nevada								Total Managed Care Enrollment
	Traditional Medicaid	% of Traditional Medicaid	Newly Eligible Adults	% of Newly Eligible	Nevada Check Up	% of Nevada Check Up	Total for Plan	% of Total	Traditional Medicaid	% of Traditional Medicaid	Newly Eligible Adults	% of Newly Eligible	Nevada Check Up	% of Nevada Check Up	Total for Plan	% of Total	
Jul-17	113,592	42%	66,248	38%	8,858	38%	188,698	41%	154,678	57%	105,971	61%	14,258	62%	274,907	59%	469,477
Aug-17	112,905	42%	65,821	38%	8,844	38%	187,570	40%	155,089	57%	105,810	61%	14,337	61%	275,236	59%	474,187
Sep-17	111,249	41%	64,672	37%	8,932	38%	184,853	40%	154,443	57%	104,698	60%	14,533	61%	273,674	58%	474,673
Oct-17	109,094	41%	63,422	37%	8,739	37%	181,255	39%	152,097	56%	103,233	59%	14,390	60%	269,720	58%	472,653
Nov-17	108,354	40%	62,040	36%	8,250	36%	178,644	38%	151,418	56%	101,623	58%	13,889	60%	266,930	57%	473,496
Dec-17	107,376	40%	60,953	35%	8,312	35%	176,641	38%	150,716	55%	100,444	58%	14,168	60%	265,328	56%	475,151
Jan-18	106,979	39%	60,277	34%	8,464	35%	175,720	37%	150,836	55%	99,870	57%	14,298	59%	265,004	56%	479,772
Feb-18	106,008	39%	59,139	34%	8,414	35%	173,561	37%	150,030	55%	98,782	56%	14,178	58%	262,990	55%	479,028
Mar-18	105,352	38%	58,666	33%	8,394	35%	172,412	36%	149,617	54%	97,834	55%	13,992	58%	261,443	55%	479,557
Apr-18	104,847	38%	57,914	32%	8,355	34%	171,116	36%	148,539	54%	96,400	54%	14,006	57%	258,945	54%	479,041
May-18	104,899	38%	57,883	32%	8,186	34%	170,968	35%	148,936	54%	95,954	53%	13,710	57%	258,600	54%	481,707
Jun-18	106,415	38%	59,104	33%	8,493	35%	174,012	36%	147,915	53%	94,493	53%	14,059	57%	256,467	53%	482,261
Jul-18	106,130	38%	59,233	33%	8,784	35%	174,147	36%	146,720	53%	93,425	53%	14,373	57%	254,518	53%	480,178
Aug-18	107,663	38%	60,459	34%	8,409	35%	176,531	36%	147,917	53%	94,012	52%	13,794	57%	255,723	53%	484,192
Sep-18	107,725	39%	60,882	34%	8,360	35%	176,967	37%	146,575	53%	93,260	52%	13,546	57%	253,381	53%	481,199
Oct-18	108,023	39%	61,760	35%	9,043	36%	178,826	37%	145,598	52%	92,311	52%	14,331	57%	252,240	52%	481,545
Nov-18	107,498	39%	61,741	35%	9,134	36%	178,373	37%	143,556	52%	90,558	51%	14,425	57%	248,539	52%	476,190
Dec-18	107,138	39%	62,435	36%	9,508	36%	179,081	38%	142,095	52%	89,703	51%	14,737	56%	246,535	52%	474,445
Jan-19	107,035	39%	63,162	36%	9,862	37%	180,059	38%	141,071	52%	89,099	51%	14,924	55%	245,094	52%	474,190
Feb-19	107,049	39%	63,164	36%	9,861	37%	180,074	38%	141,145	52%	89,105	51%	14,920	55%	245,170	52%	474,283
Mar-19	110,744	40%	66,387	36%	9,785	37%	186,916	38%	144,117	52%	91,227	50%	14,742	55%	250,086	51%	488,376
Apr-19	110,644	40%	66,467	37%	8,817	36%	185,928	38%	143,253	52%	90,444	50%	13,503	56%	247,200	51%	483,365
May-19	113,139	40%	68,507	37%	8,792	36%	190,438	39%	144,981	51%	91,153	49%	13,416	56%	249,550	51%	491,636
Jun-19																	

Note:

Fiscal Year Averages

Fiscal Year	Amerigroup								Health Plan of Nevada							
	Traditional Medicaid	% of Traditional Medicaid	Newly Eligible Adults	% of Newly Eligible	Nevada Check Up	% of Nevada Check Up	Total for Plan	% of Total	Traditional Medicaid	% of Traditional Medicaid	Newly Eligible Adults	% of Newly Eligible	Nevada Check Up	% of Nevada Check Up	Total for Plan	% of Total
FY14	110,819	45%	54,962	42%	7,744	39%	173,525	44%	133,741	55%	76,332	58%	12,146	61%	222,218	56%
FY15	112,119	44%	63,560	40%	7,655	39%	183,334	42%	143,176	56%	95,741	60%	12,020	61%	250,936	58%
FY16	114,584	44%	65,662	40%	8,222	39%	188,468	42%	148,317	56%	100,569	60%	13,030	61%	261,916	58%
FY17	115,016	43%	67,149	39%	8,638	38%	190,802	41%	151,854	57%	104,861	61%	13,940	62%	270,655	59%
FY18	108,089	40%	61,345	35%	8,520	36%	177,954	38%	151,193	55%	100,426	57%	14,152	59%	265,770	56%
FY19 YTD	108,435	39%	63,109	35%	9,123	36%	180,667	38%	144,275	52%	91,300	51%	14,246	56%	249,821	52%

Managed Care Providers (Continued)

Month	Silver Summit								Aetna								Total Managed Care Enrollment
	Traditional Medicaid	% of Traditional Medicaid	Newly Eligible Adults	% of Newly Eligible	Nevada Check Up	% of Nevada Check Up	Total for Plan	% of Total	Traditional Medicaid	% of Traditional Medicaid	Newly Eligible Adults	% of Newly Eligible	Nevada Check Up	% of Nevada Check Up	Total for Plan	% of Total	
Jul-17	1,618	0.1%	1,547	0.2%	169	0.2%	3,334	0.2%	1,210	0.4%	1,238	0.7%	90	0.4%	2,538	0.5%	469,477
Aug-17	5,691	0.6%	5,290	0.9%	400	0.7%	11,381	0.7%									474,187
Sep-17	8,056	2.1%	7,488	3.0%	602	1.7%	16,146	2.4%									474,673
Oct-17	10,939	2.9%	9,860	4.2%	879	2.5%	21,678	3.4%									472,653
Nov-17	13,944	4.0%	12,779	5.6%	1,199	3.7%	27,922	4.6%									473,496
Dec-17	15,846	5.1%	15,866	7.2%	1,470	5.1%	33,182	5.9%									475,151
Jan-18	18,041	5.8%	19,238	9.0%	1,769	6.1%	39,048	7.0%									479,772
Feb-18	19,553	6.5%	21,064	10.7%	1,860	7.2%	42,477	8.1%									479,028
Mar-18	21,182	7.7%	22,617	12.6%	1,903	7.8%	45,702	9.5%									479,557
Apr-18	22,666	8.2%	24,240	13.6%	2,074	8.5%	48,980	10.2%									479,041
May-18	24,128	8.7%	26,046	14.5%	1,965	8.2%	52,139	10.8%									481,707
Jun-18	24,254	8.7%	25,601	14.3%	1,927	7.9%	51,782	10.7%									482,261
Jul-18	24,241	9.0%	25,259	14.0%	2,013	8.0%	51,513	11.0%									480,178
Aug-18	24,655	8.8%	25,357	14.1%	1,926	8.0%	51,938	10.7%									484,192
Sep-18	24,134	8.7%	24,854	13.9%	1,863	7.8%	50,851	10.6%									481,199
Oct-18	24,011	8.6%	24,514	13.7%	1,954	7.7%	50,479	10.5%									481,545
Nov-18	23,788	8.7%	23,583	13.4%	1,907	7.5%	49,278	10.3%									476,190
Dec-18	23,585	8.6%	23,213	13.2%	2,031	7.7%	48,829	10.3%									474,445
Jan-19	23,531	9.0%	23,371	13.0%	2,135	8.0%	49,037	10.0%									474,190
Feb-19	23,533	8.7%	23,371	13.3%	2,135	7.9%	49,039	10.3%									474,283
Mar-19	24,640	8.8%	24,540	13.5%	2,194	8.2%	51,374	10.5%									488,376
Apr-19	24,205	8.7%	24,074	13.3%	1,958	8.1%	50,237	10.4%									483,365
May-19	25,100	8.9%	24,646	13.4%	1,902	7.9%	51,648	10.5%									491,636
Jun-19																	

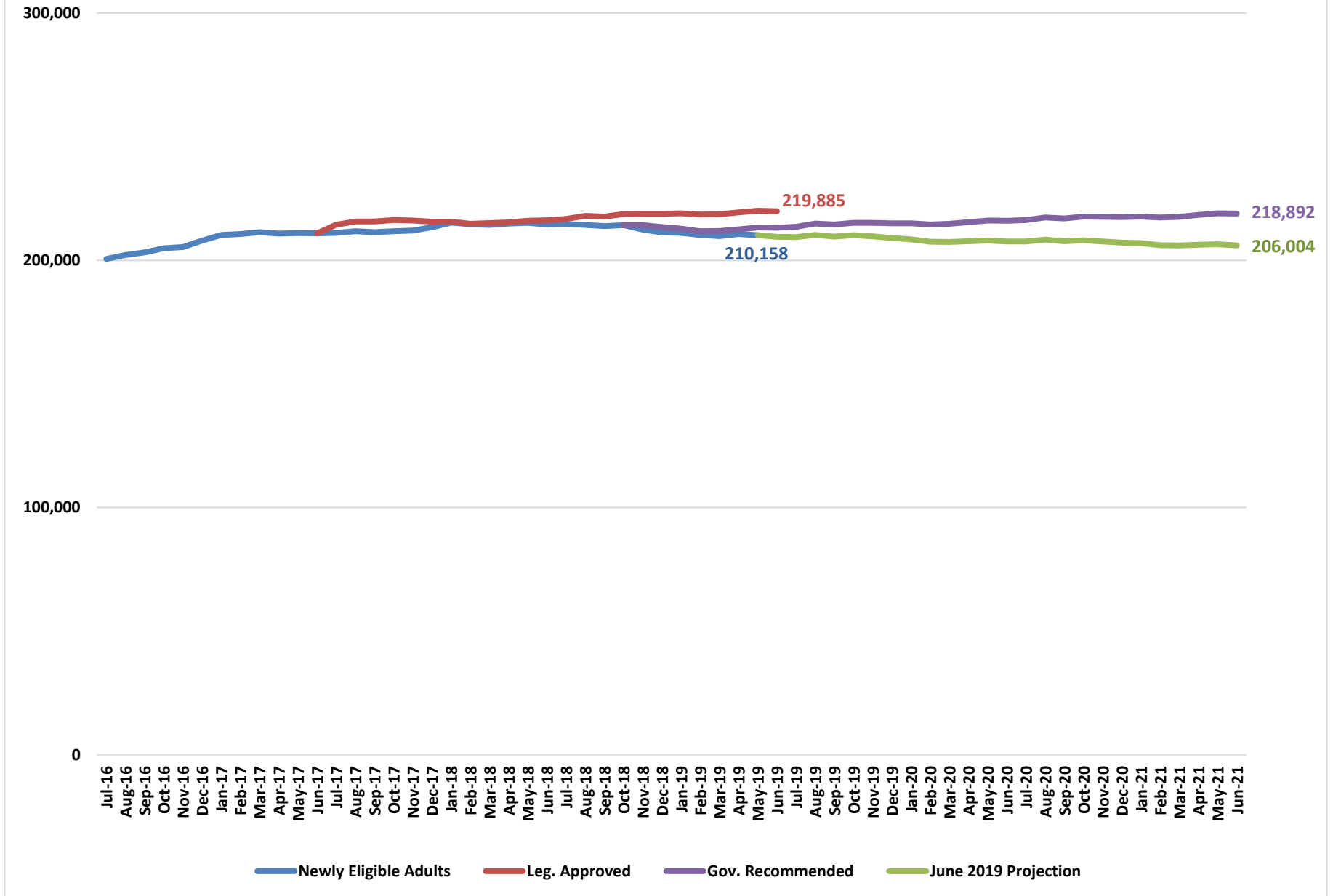
Note: Traditional Medicaid totals include both cat 11 (CHIP Expansion), and cat 12 (TANF/CHAP) populations.

Fiscal Year Averages

Fiscal Year	Silver Summit								Aetna							
	Traditional Medicaid	% of Traditional Medicaid	Newly Eligible Adults	% of Newly Eligible	Nevada Check Up	% of Nevada Check Up	Total for Plan	% of Total	Traditional Medicaid	% of Traditional Medicaid	Newly Eligible Adults	% of Newly Eligible	Nevada Check Up	% of Nevada Check Up	Total for Plan	% of Total
FY14																
FY15																
FY16																
FY17																
FY18	15,493	5.0%	15,970	8.0%	1,351	5.0%	32,814	6.1%	1,210	0.4%	1,238	0.7%	90	0.4%	2,538	0.5%
FY19	24,129	8.8%	24,253	13.5%	2,002	7.9%	50,384	10.5%	0	-	0	-	0	-	0	-

Note: Aetna Better Health only participated in the Managed Care program for two months. Their case loads for the two months are included in Totals

Newly Eligible Adults



Newly Eligible Adults

FY16 & FY17 Biennium

Month	Newly Eligible Adults
Jul-15	182,223
Aug-15	183,742
Sep-15	187,110
Oct-15	189,623
Nov-15	192,224
Dec-15	196,446
Jan-16	199,534
Feb-16	203,292
Mar-16	203,939
Apr-16	202,469
May-16	202,255
Jun-16	201,613
Jul-16	200,583
Aug-16	202,122
Sep-16	203,163
Oct-16	204,878
Nov-16	205,406
Dec-16	207,966
Jan-17	210,296
Feb-17	210,670
Mar-17	211,414
Apr-17	210,861
May-17	211,053
Jun-17	210,960

FY18 & FY19 Biennium

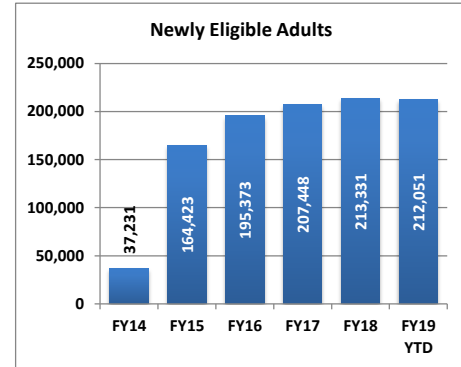
Month	Newly Eligible Adults	Leg. Approved	Gov. Recommended	June 2019 Projection
Jul-17	211,060	214,390		
Aug-17	211,736	215,672		
Sep-17	211,428	215,691		
Oct-17	211,805	216,251		
Nov-17	212,028	216,105		
Dec-17	213,384	215,596		
Jan-18	215,236	215,576		
Feb-18	214,570	214,810		
Mar-18	214,266	215,051		
Apr-18	214,869	215,296		
May-18	215,101	216,011		
Jun-18	214,489	216,215		
Jul-18	214,714	216,778		
Aug-18	214,260	218,009		
Sep-18	213,869	217,673		
Oct-18	214,196	218,687	214,196	
Nov-18	212,434	218,810	214,163	
Dec-18	211,278	218,802	213,434	
Jan-19	211,069	218,980	212,821	
Feb-19	210,227	218,499	211,792	
Mar-19	209,747	218,614	211,841	
Apr-19	210,608	219,372	212,515	
May-19	210,158	220,076	213,271	210,158
Jun-19		219,885	213,207	209,537

FY20 & FY21 Biennium

Month	Gov. Recommended	June 2019 Projection
Jul-19	213,548	209,414
Aug-19	214,844	210,262
Sep-19	214,473	209,598
Oct-19	215,186	210,151
Nov-19	215,116	209,720
Dec-19	214,953	209,025
Jan-20	214,949	208,490
Feb-20	214,489	207,507
Mar-20	214,770	207,461
Apr-20	215,462	207,748
May-20	216,075	208,008
Jun-20	215,955	207,604
Jul-20	216,251	207,615
Aug-20	217,308	208,350
Sep-20	216,930	207,685
Oct-20	217,657	208,058
Nov-20	217,573	207,634
Dec-20	217,468	207,129
Jan-21	217,660	206,927
Feb-21	217,290	206,150
Mar-21	217,640	206,043
Apr-21	218,334	206,265
May-21	218,977	206,466
Jun-21	218,892	206,004

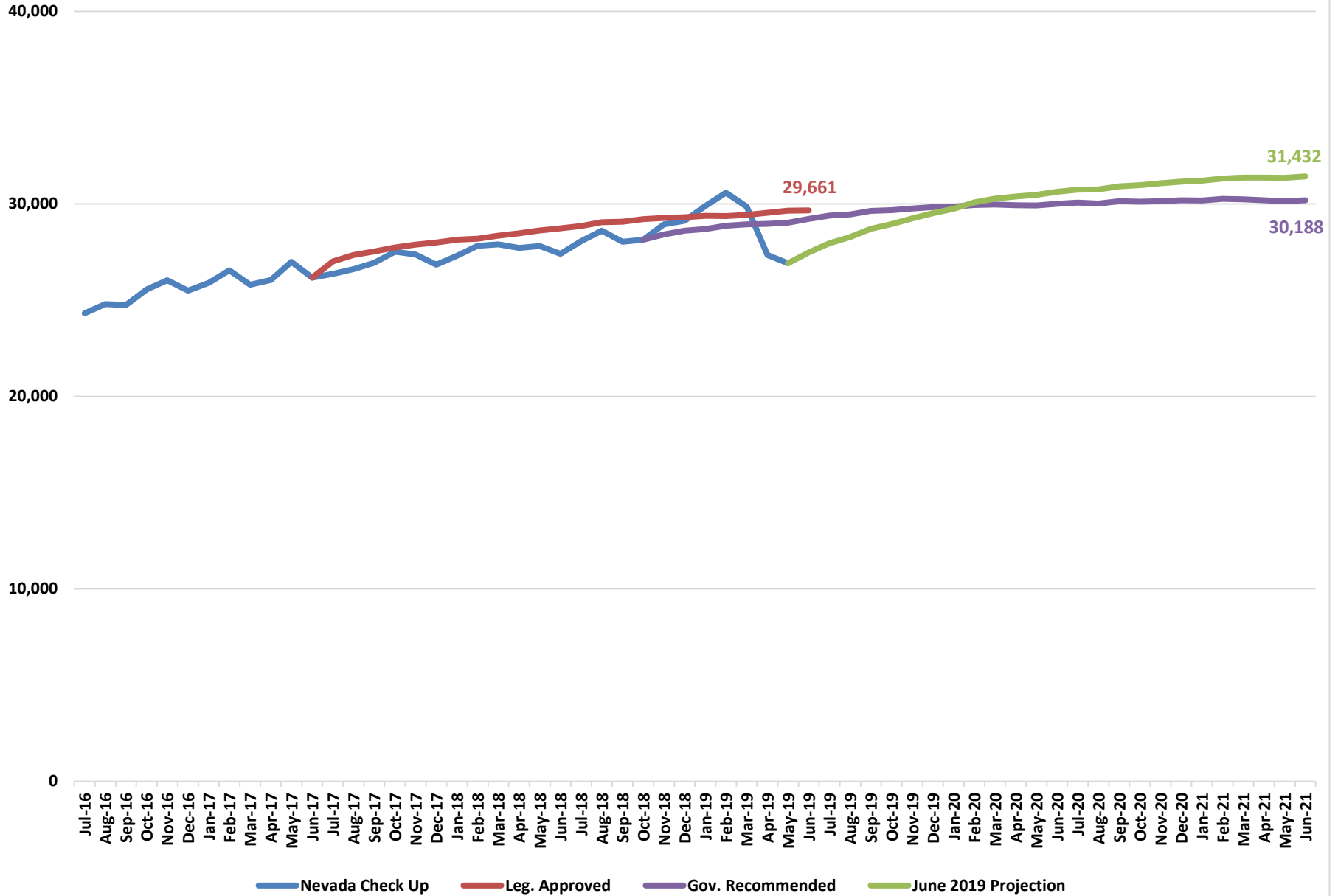
Fiscal Year Averages

Fiscal Year	Newly Eligible Adults	Percent Change
FY14	37,231	
FY15	164,423	341.6%
FY16	195,373	18.8%
FY17	207,448	6.2%
FY18	213,331	2.8%
FY19 YTD	212,051	-0.6%



Note: This caseload includes childless adults age 19-64 between 0%-138% FPL and parents age 19-64 between 23%-138% FPL.

Nevada Check Up



Nevada Check Up

FY16 & FY17 Biennium

Month	Nevada Check Up
Jul-15	20,995
Aug-15	21,373
Sep-15	21,154
Oct-15	22,419
Nov-15	22,742
Dec-15	22,922
Jan-16	22,211
Feb-16	23,276
Mar-16	22,471
Apr-16	23,837
May-16	24,431
Jun-16	23,728
Jul-16	24,315
Aug-16	24,801
Sep-16	24,741
Oct-16	25,558
Nov-16	26,036
Dec-16	25,492
Jan-17	25,896
Feb-17	26,551
Mar-17	25,795
Apr-17	26,050
May-17	26,989
Jun-17	26,165

FY18 & FY19 Biennium

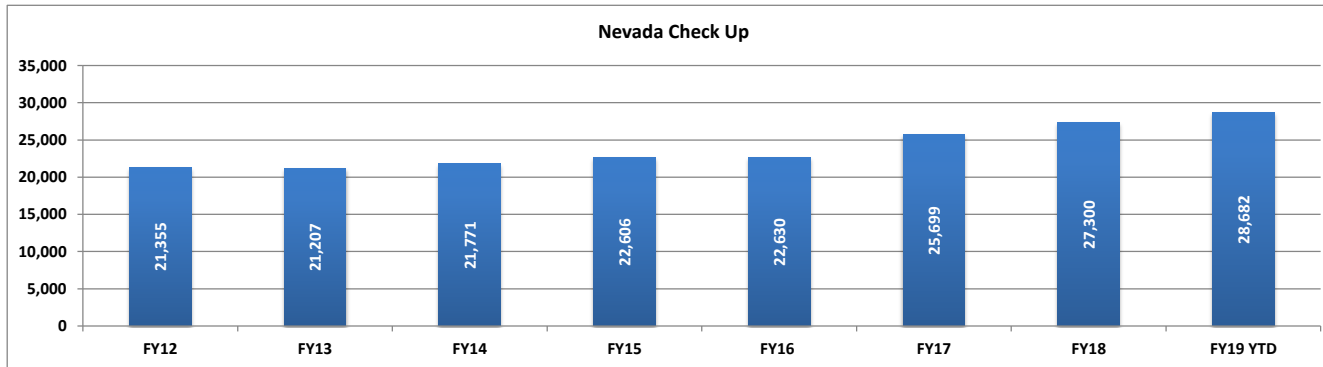
Month	Nevada Check Up	Leg. Approved	Gov. Recommended	June 2019 Projection
Jul-17	26,369	27,018		
Aug-17	26,604	27,342		
Sep-17	26,935	27,531		
Oct-17	27,515	27,739		
Nov-17	27,372	27,880		
Dec-17	26,842	27,997		
Jan-18	27,314	28,146		
Feb-18	27,825	28,194		
Mar-18	27,893	28,354		
Apr-18	27,713	28,476		
May-18	27,813	28,625		
Jun-18	27,406	28,736		
Jul-18	28,066	28,848		
Aug-18	28,608	29,054		
Sep-18	28,027	29,076		
Oct-18	28,144	29,215	28,144	
Nov-18	28,937	29,268	28,416	
Dec-18	29,122	29,306	28,607	
Jan-19	29,890	29,387	28,699	
Feb-19	30,588	29,370	28,871	
Mar-19	29,854	29,431	28,940	
Apr-19	27,350	29,545	28,961	
May-19	26,917	29,648	29,030	26,917
Jun-19		29,661	29,219	27,483

FY20 & FY21 Biennium

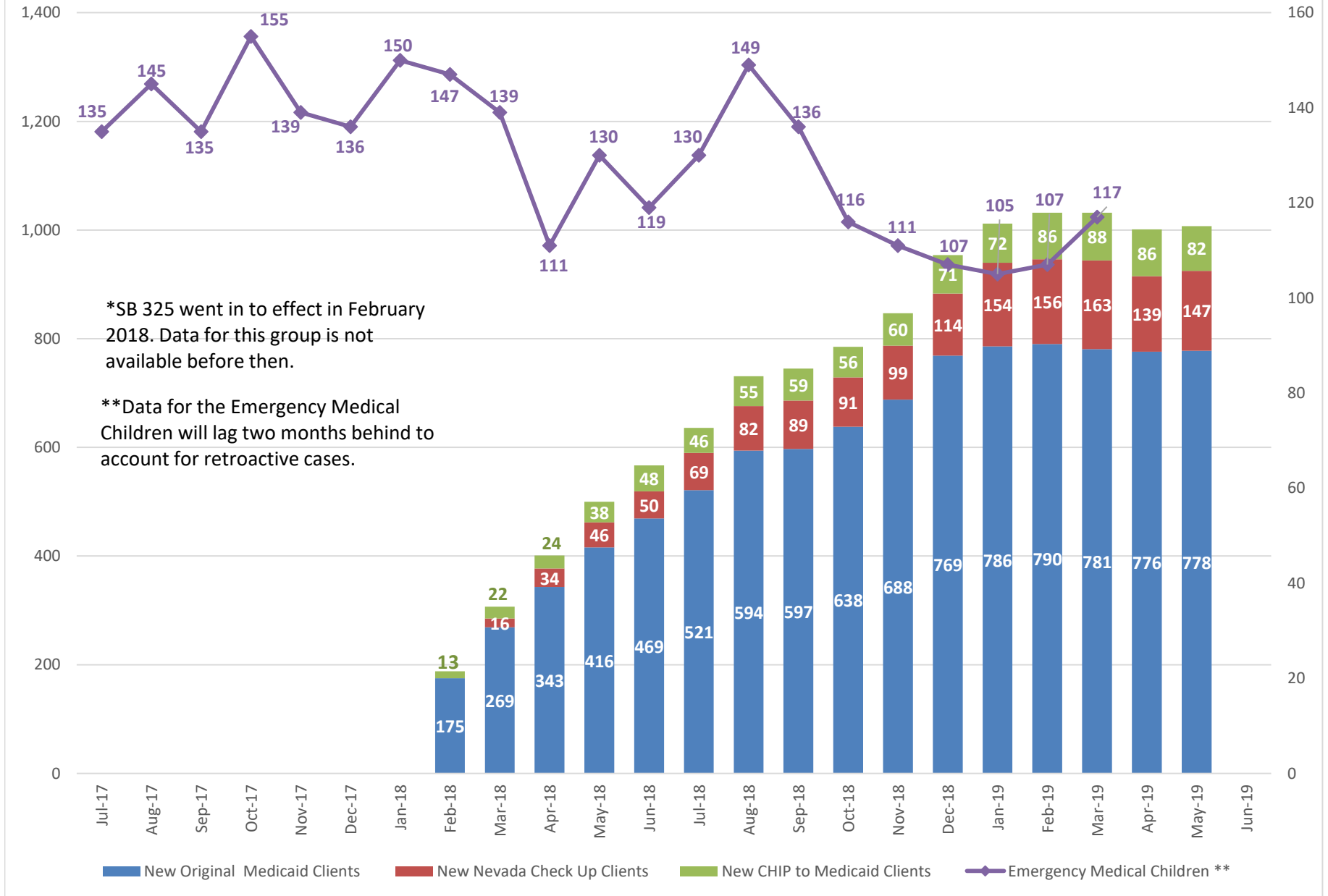
Month	Gov. Recommended	June 2019 Projection
Jul-19	29,390	27,954
Aug-19	29,450	28,276
Sep-19	29,635	28,701
Oct-19	29,676	28,954
Nov-19	29,764	29,245
Dec-19	29,835	29,511
Jan-20	29,854	29,752
Feb-20	29,950	30,076
Mar-20	29,965	30,279
Apr-20	29,928	30,389
May-20	29,917	30,475
Jun-20	30,012	30,633
Jul-20	30,070	30,743
Aug-20	30,022	30,755
Sep-20	30,139	30,917
Oct-20	30,114	30,974
Nov-20	30,145	31,076
Dec-20	30,189	31,164
Jan-21	30,182	31,206
Feb-21	30,259	31,323
Mar-21	30,242	31,370
Apr-21	30,187	31,369
May-21	30,139	31,357
Jun-21	30,188	31,432

Fiscal Year Averages

Fiscal Year	Nevada Check Up	Percent Change
FY12	21,355	
FY13	21,207	-0.7%
FY14	21,771	2.7%
FY15	22,606	3.8%
FY16	22,630	0.1%
FY17	25,699	13.6%
FY18	27,300	6.2%
FY19 YTD	28,682	5.1%



New Clients Added Under SB 325*



New Clients Added Under SB 325

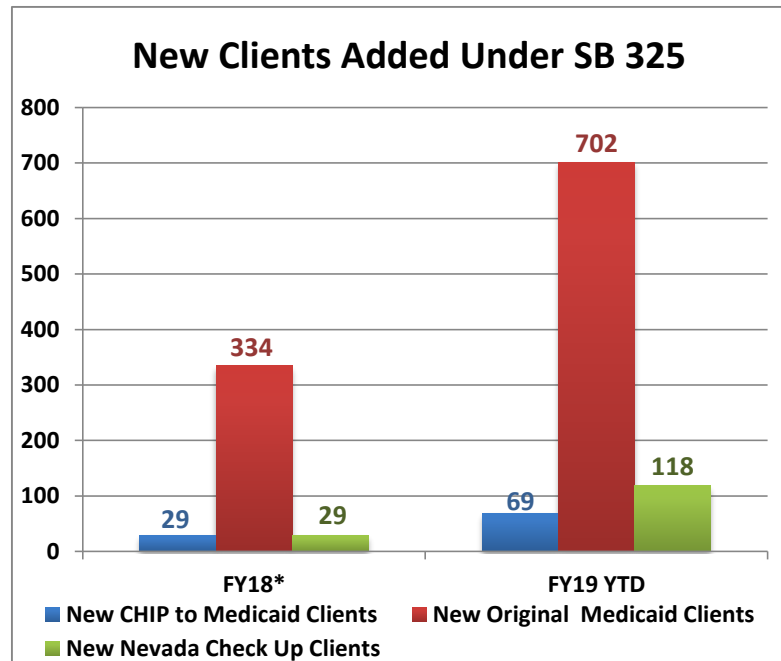
Month	New CHIP to Medicaid Clients	New Original Medicaid Clients	New Nevada Check Up Clients	Total New Clients
Feb-18	13	175	0	188
Mar-18	22	269	16	307
Apr-18	24	343	34	401
May-18	38	416	46	500
Jun-18	48	469	50	567
Jul-18	46	521	69	636
Aug-18	55	594	82	731
Sep-18	59	597	89	745
Oct-18	56	638	91	785
Nov-18	60	688	99	847
Dec-18	71	769	114	954
Jan-19	72	786	154	1012
Feb-19	86	790	156	1032
Mar-19	88	781	163	1032
Apr-19	86	776	139	1001
May-19	82	778	147	1007
Jun-19				

Note: Numbers are updated monthly to reflect the caseload with retroactive clients

Fiscal Year Averages

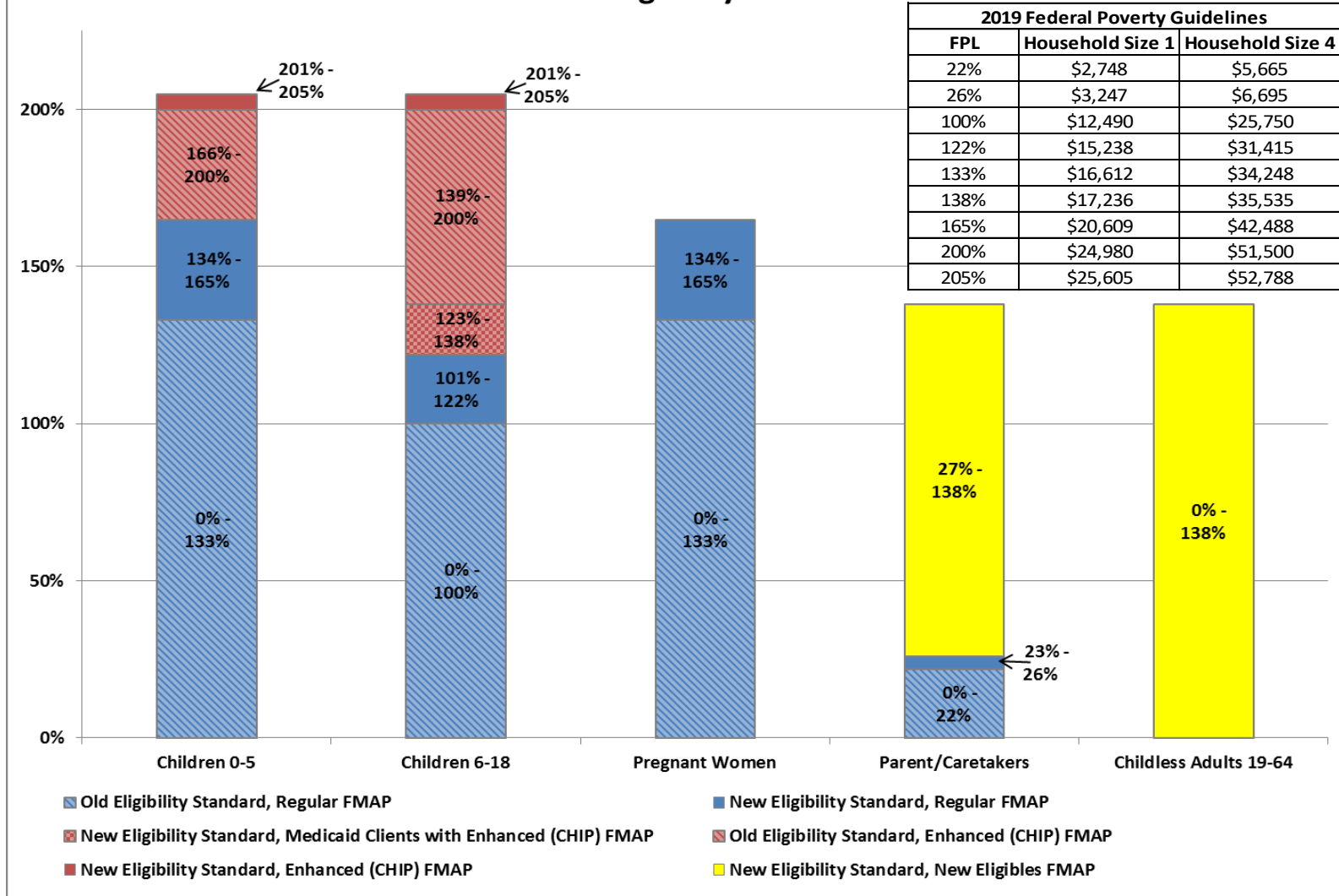
Fiscal Year	New CHIP to Medicaid Clients	New Original Medicaid Clients	New Nevada Check Up Clients	Total New Clients
FY18*	29	334	29	393
FY19 YTD	69	702	118	889

* FY18 only includes five months: February through June 2018



SB 325 allowed alien children who are younger than 18 to enroll in Medicaid programs or Nevada Check Up without the 5-year waitout period.

Medicaid Eligibility and FMAP



Federal Medical Assistance Percentages (FMAP)

State Fiscal Year	FMAP	Enhanced (CHIP) FMAP	ACA Enhanced (CHIP) FMAP	New Eligibles FMAP
FY03	51.79%	66.25%		
	52.53%	66.77%		
FY04	54.30%	68.01%		
	55.34%	68.74%		
FY05	55.66%	68.96%		
FY06	55.05%	68.53%		
FY07	54.14%	67.90%		
FY08	52.96%	67.07%		
FY09	50.66%	65.46%		
	61.11%	72.78%		
FY10	50.12%	65.08%		
	63.93%	74.75%		
FY11	51.25%	65.87%		
	62.05%	70.44%		
FY12	55.05%	68.54%		
FY13	58.86%	71.20%		
FY14	62.26%	73.58%		100.00%
FY15	64.04%	74.83%		100.00%
FY16	64.79%	75.35%	92.60%	100.00%
FY17	64.74%	75.32%	98.32%	97.50%
FY18	65.48%	75.84%	98.84%	94.50%
FY19	65.09%	75.57%	98.57%	93.50%
FY20	64.17%	74.92%	89.29%	91.50%
FY21	64.63%	75.24%	78.11%	90.00%
FY22	65.24%	75.66%		90.00%
FY23	65.99%	76.19%		90.00%

Note: The green cells reflect a 2.95% increase for the period April 2003 through June 2004. The blue cells reflect the ARRA stimulus adjusted FMAP for October 2008 through December 2010. The FMAP values for FY21 through FY23 are projections. The ACA Enhanced (CHIP) FMAP ends in September 2020.